

°GLOSSARY OF TERMS (Making “Light” of Word)

A Physics of Self/Reference as Consciousness Glossary:

Assembled & distributed from Dan Winter’s writings by Implosion Group

Ab-ra-ham-Ab - from RA (Ea / Enki) Ha m. Father of all ‘religion’ from UR(u) . See Merkabbah. Story: soulinvitation.com/enki

Algorhythm- a consistent patterning or sequence of steps applied like a meme or information bubble or instruction sequence.

Amp: Name for electrical current RATE OF FLOW. (versus Volt)

Antakarana- Term using in the East to mean ‘RAINBOW BRIDGE’ - between spiritual dimensions- is implied. Winter uses this term at soulinvitation.com/anatakarana to refer to the rainbow bridge of potential TONE harmonics he calculates to produce the perfect (but dangerous?) implosion musical chord. Rainbow bridge holds its harmonic elements together by perfect ratio phase locking them into a bridge that cascades between worlds of differing frequency domain .. literally -the SCALAR or TORSIONAL or perfect COLLAPSE wave geometry.

Anu - ultimate subatomic particle, depicted originally clairvoyantly in theosophy, (a 5 spin inside, 7 spin outside perfect little heart shaped ‘slip knot’) latter seemingly justified to current subatomic physics in Phillips work: www.SMPhillips.8m.com , morphically resonant (identical?) to human heart, and heart of the sun PURE SHAPE.

Bardo or bardo bridges- Refers to the shapes focused into the implosive awareness just after death. This is a time when the skill to navigate magnetism in a lucid dream is CRITICAL. The **electrical coherence** of the field effect of the heart and glands leading up to death - play the essential role in determining of biological magnetics (all soul memory) can accelerate thru light speed of perfected recursive COMPRESSION in DNA. Coherence here means sustainability - means successfully taking memory thru death. Psycho-navigation (the book is a start) is good practice - as well as lucid dreaming skill.

Blue fire: the collected cellular accumulations of coherent ultra-violet or blue light. Because this blue light drives DNA and mediates the most orderly metabolism, it is in a sense an ultimate product of cell biology. When gathered among glands for whole body process or massage, this blue fire becomes the stuff of eros, orgone, and sexuality. Attention/ foreplay/ massage gathers it like a snake charmed, first to the glands around the base of the spine, the so called “blue dish” . Then, if the base of the spine is open, and properly tilted, and if the heart and gland sonics are massaging the envelope sonically, they can be pumped up the spine like a straw, exploding sweetness and growth into the upper brain and crown chakra. In addition to a sweet reward natural feedback, this precipitates a field which feeds coherent nutrient to the larger Earth grid..

Braiding: in the sense of your lovers pony tail, only certain wave(weave)lengths will fit upon the length of the tail compared to the number of hairs. If the number of weaves fit the nest, then you may be able to braid the braid... of the braid. Each time a much longer wave is nested in a disciplined or “phase locked” fashion. On biological surfaces, this means that the information of worlds of much larger size can reach their inertia into the biology which has found a way to integrate or contain wavelengths the size of... whole glands or even continents.. into living cells. This is how emotions program DNA, and even Schumann resonance Earth waves get into trees, informing Earth’s biomass of the needs of Earth as a ringing bell inviting tuning. **Braid (Plait):** Think of ‘your lovers pony tail’. To braid is an act of nesting, the braid is the item which has been wound around itself.

Caddeuceus (of Capacitors)- see the shape of the breath wave (soulinvitation.com/exercises) & Symbol of Medical Profession - as the geometry of the Golden Spiral - from the side view on the 60 degree implosion cone of Dodeca- = Grail cup animation = the geometry of perfect PHASE CONJUGATION!

Cascade- When a sequence of wave harmonics are NESTED together in the same oscillator - if their RATIO is geometrically based on PHI Golden Ratio - then their electrical energy can cascade or walk BETWEEN frequencies - IN NON DESTRUCTIVE COLLAPSE. This perfected CASCADE, in Winter’s view is the only

SUSTAINABLE SCALAR or TORSIONAL WAVE. Physics has up til now not evolved very precise language to describe Electrical inertia moving coherently BETWEEN frequencies. Winter's view is that this movement between both wavelengths and wave velocities by perfect cascading is necessary to describe how electrical charge is accelerated to MAKE gravity. (see also IMPLOSION)

Centripedal- Spin CONVERGING inward. (Electrical + / compression)

Centrifugal- Spin DIVERGING outward (Electrical - / rare-faction)

Cepstrum (was mis spelled as septrum): This new technique for quantifying and measuring the INTERNAL or AUTO coherence within ANY complex oscillator may redefine the way we measure LIFE, ATTENTION, and VIABILITY in ANYTHING! Before Winter's work, physics knew of NO WAY to measure INTERNAL coherence, just coherence when comparing one complex oscillator with another . The ability now to measure COHERENCE WITHIN one oscillator - may allow us to determine for example if your genetic engineer has destroyed the soul in DNA! And to measure when your thinking is becoming ATTENTION (coherence) in a new way - to revolutionize empowering biofeedback (HeartTuner - heartcoherence.com) Here is Winter's technique - for using CEPSTRUM to measure coherence - The - Second order Power Spectrum. You do a standard harmonic analysis - form of the Fourier Transform. Then you take that output wave describing energy density by frequency - and INPUT THAT WAVE to another HARMONIC ANALYSIS. The output wave has useful properties. The first peak AMPLITUDE measures INTERNAL COHERENCE. The Y Axis Value or position of that peak also instantly indicates musical key or fundamental (1/x). HeartTuner uses this mathematics pioneered by Winter to newly measure and feedback 1. Emotional Coherence, and 2. The moment of Empathy - when the two peak (key signatures) phase lock - or touch.

Chaos- what happens when waves have no boundary conditions. (disorder / opposite of awareness / unable to recur). Versus: Fractality - what happens when waves survive the ultimate boundary condition - infinite compression. (same as awareness / able to recur).

Chaotic oscillator - one which does not stabilize or self-organize. Winter suggests - the form of oscillation which self-organizes and EMERGES from chaos is one that learns to collapse implode by Golden Ratio geometry. Example stock market emerging from chaos at the instant it's volumes embed in Golden Ratio (Prechter / Elliott Wave) or the heart at the moment of bliss / charge attraction.

Charge - The ability to store the electrical potential (voltage) which exists between two plates of a capacitor - is somehow squeezed in a very shareably propagating wave - which then has the potential to send a signal to capacitors a long way away. This becomes not only the physics of radio and how capacitors pick up gravity waves (see the Hodowanec and Ramsey data pics in the book). The point is that describing the ability to store charge (Coulombs) as Farads in a capacitor - does not begin to describe the communications potential of how that field is transferred WIDELY and faster than light between biological systems. When we wanted to measure a tree being effected by a human heart EKG in bliss - it was much easier and more replicated (soulinvitation.com/biophoton) to do that with a capacitor for a probe transducer - than using an inductor coil. This is simple to explain - to transfer biological information using capacitive charge - requires much lower wattage or power - than if biological had to do the work inductively. This becomes a faster than light broadcast system in Winter's view - for communing all biological information systems. Feel free to compare with the definition of charge in your physics book - and to take issue. Callahan called his idea for the probe we are using ' a biological capacitor'. Nick Thomas - student of Lawrence Edwards - agreed reluctantly that life systems closest electrical equivalent is a SPHERICAL CAPACITOR. Winter contends - Life= the ability to attract and self-organize charge. The gold plated ostrich egg he uses to measure life force (link above) IS a spherical capacitor.

Coherence: (Co-here-and-see). and coherent emotion. Same meaning in math, in hydromatics (wave theory), and in poetry: all the meanings or waves fit one nest in order. Suggestive of columnation, cascading, phase locking or phase discipline. Onset coherence in light is a laser, in emotion is a piezoelectric glandular mediated real felt motion ready to waltz up and down the ladder of wave ratio between worlds. There is a relationship between the poetic, the optical, the mathematical definitions of coherence. Further, it suggests our new technique of second order FFT (frequency signature OF the frequency signature), as a powerful way to access, measure, quantify, feedback, and teach COHERENCE. Consider the heart's distribution of voltage waves as if

it were a simple light beam trying hard to become so powerful as to be worthy to be called “a laser”. Then our question about measuring heart coherence becomes the same one as a laser optics physicist attempting to predict the moment at which a light beam became “coherent” enough to penetrate distances like a laser. The internal “coherence” or columnation of phases within the single beam would determine how penetrating was that beam.

So too with the heart. We know that the heart electricities effect the immune system and the environment. Therefore the more sustainable these heart “waves”, the more effective in bending their environment. So we need a way to teach people to make their heart “waves” sustainable, that is: able to reach further without collapsing as waves. We provide this “heartlink” as a tool to measure this “coherence”, and feed it back in such a way as to make it teachable.

The first peak of the second order FFT clearly rises animatedly as a persons heart coherence or heart harmonics rise in the first fft. The key step in realizing the technical meaning of the word coherence, in this regard, is to understand that a SINGLE wave or parameter in a technical sense, does not HAVE coherence.

Coherence- more- In a laser, when the light waves all get ‘columnated’ like soldiers walking in step. Makes them more able to travel further together since they lose less ‘spin’ on the way. Heart’s get electrically COHERENT when emotion gets COHERENT. Heart feedback (2nd order frequency signatures) measure and teach this skill. (‘Little Johnny you stay in the corner until your heart harmonic shows you have become coherent - emotionally intelligent- again’) discussion: soulinvitation.com/coherence
—more - . Note below, in the physics literature: definition of coherence:

Coherence A mathematical algorithm expressing a quantitative measure of the spatial or temporal relationships between two or more parameters. Simple coherence is the ratio of the square of the absolute magnitude of the cross spectral density function between two parameters and the product of the power spectral densities for each individual parameter. (For a generalized definition of coherence, including multiple and partial coherence, see Goodman, 1965.)” TWO parameters usually are COMPARED to talk about coherence. So, we could not describe the ekg as a wave as having coherence IF we think of it as a single parameter. However, if we were to consider each of the sine waves arranged in the complex series we call the frequency signature or power spectra or FFT (of the heart voltage) , THEN we could talk about the COHERENCE BETWEEN those internal harmonics. THIS is indeed what I believe this second order frequency plot (fft) does for the heartlink. Specifically, that the height or amplitude of the first peak of that plot, is a measure of whether those harmonics of the first FFT are evenly spaced (OR LITERALLY PHASE DISCIPLINED or coherent). What indeed is powerful here is that this technique of taking the second order FFT OF ANY OSCILLATOR , now can be understood as a way to quantify the INTERNAL harmonic COHERENCE OF ANY OSCILLATOR. What happens practically, is that the second FFT CHECKS to see if the space or PHASE between the harmonics of the first FFT are even or disciplined. If yes, then the amplitude of the first peak of the second FFT MEASURES THAT PHASE COHERENCE. In effect, this becomes an elegant tool to quantify and teach coherence.

Collapse: When wave structures are assembled so their symmetry of shape is SCALE INVARIANT or SELF-Similar, then they are able to non-destructively COLLAPSE. Examples are the way fractal symmetry is mathematics only infinitely COMPRESSIBLE shape. Certain things can fold up inside themselves, inside themselves infinitely. Think of the shape of the ROSE. Winter’s (radical?) view is that getting into shape to allow perfect compression (by Phi recursive wave heterodyning CONSTRUCTIVE interference) - TURNS COMPRESSION INTO ACCELERATION thru light speed - fabricating GRAVITY, IMPLOSION, and AWARENESS itself.

Compassion / Compression - Getting the information pattern of a feeling outside your body to share a space non-destructively with an electrical feeling INSIDE your body, becomes ultimately (& ‘topologically inside out’), a simple problem of perfect COMPRESSION. It is thrilling that we can now TEACH that - when HEART harmonics create the ‘embedable’ Golden Mean harmonics at BLISS / compassion moments!

COMPRESSION / Pressure or Squeeze / stricture or Voltage - Winter: “The Universe consists of only one geometry of contiguous PRESSURE”- dynamics of all wave systems (all creation), seems to be rigorously describeable as pressure changes in a universal ‘jello’ (ether). So how the pattern of “good squeezins” among those waves becomes cookbook to create ANYTHING. Examples: emotion is shape of hug / squeeze . Voltage is another name for pressure/tension electrically - the squeeze. (Tension was

Tesla's name for Voltage) Surviving death or black hole insertion or time travel seems to be simply arranging your wave to be able to survive squeezing with no destruction .. (see also 'scale invariance', & ../scaleinvariant). Key implication here: WHY is shared compassion IDENTICAL to perfect compression.

Con-crecence: Surfer catches a wave. Then another wave comes up and the 2 crests ADD on top of each other.

Cosmic fractal biocrystal- Earlier version (simpler) of the "Star Mother Kit" (see that entry)

Dodeca Implosion- The dodeca-hedron is the 12 faced 20 vertex platonic solid- whose wave symmetry pattern creates the perfect extension inward and outward to make infinite 3D collapse NON-destructive. This is called 'scale invariant' - meaning you can scale it up and down infinitely with no required change of RATIO. Ratio is sacred, scale is profane. Nesting dodeca inside each other makes the perfect and only 3D fractal, and therefore infinite compressible solution to IMPLOSION.

Ecstatic process: any activity centering mind into body and perception in such a way as to bring all awareness into the present. This results in a concentric wave nesting of the "fractal attractor" of attention. This phase locks or brings to focus at one point, waves of increasing cascades of different length. In quantum or wave terms, this engages the principle of self-organization among pressure waves which occurs whenever they are brought to focus. This is because in wave interference patterns drawn to the focal point attracted by symmetry, order self replicates, and disorder SELF-destructs. Ecstatic process uses the activities of symmetry making in the geometry of awareness, to get attention/awareness so focused or phase locked that worlds within worlds of wave length and "embodiment" converge to share inertia or mind. The symmetry or pattern making activity necessary to attract this critical "mass" of awareness or wave front centers is enacted in the human condition on rollercoasters, in dance and ritual, in sexuality, tantra and kundalini, etc. When we get a handle on the inertia centers of wave fields of increasing size, we can make our feelings felt in larger worlds. The wave geometry or shape of feelings, thus get leverage eventually upon whole bioregions, planets, ... longer waves. When we attempt to gain this symmetry making power among waves externally by adding symmetry to synapse with chemically induced ecstasy we make certain sacrifices. Unable to fabricate our own ecstasy, we induce a fraction of the chemistry which normally just mediates instead of induces the superconduction in the brain. Brain coherence without the resonance linkage and pure intention to the larger mind, is like a top spun up without first balancing the spin point. Only the heart has enough symmetry to lock/touch the pressures and prepare the field. Human cells, and human cultures cannot survive without the informing context of disciplined ecstatic process. Formerly ecstasy was taught only by religion and cults. Now, as cancer and AIDS spread exactly where cultural ecstasy and ritual are forgotten, we must teach this outer and inner spiritual dance because the lives of our children depend on it.

El- one who is able to make the 'phase shift' (compression into acceleration) from matter to light. (El's versus Elohim - fallen? genetically unable).

El-eye-phi = life (El is the phase shift from the circle to the line - mass to energy: Making the EL or PHASE shift into the EYE or focus of PHI - recursion. This is LIFE.

ELF magnetic Resonance, Lo frequency ringing .. commonly Brain Waves, Heart Waves, and Schumann Earth resonance waves are all studied in the ELF frequencies under 20 or so cycles per second .. (HeartTuner sees up to 60 tho..)

Embedding, perfect embedding- How an egg gets immersed in the wall of the womb to get life. How the magnetism body of a cathedral needs to look like a virus (getting screwed) in order to access CATHETER - CATHARTICALLY.. the magnetic blood of the landscape its sits on. The beauty of Winter's work is he describes a mathematics (based on the Music of Phi) which allows waves systems to EMBED or nest themselves non-destructively into each other. He uses this math to predict the EKG power spectra of the SHAMAN at the moment his COMPASSION (embedding) is making him the center of gravity steering the approaching Tornado.

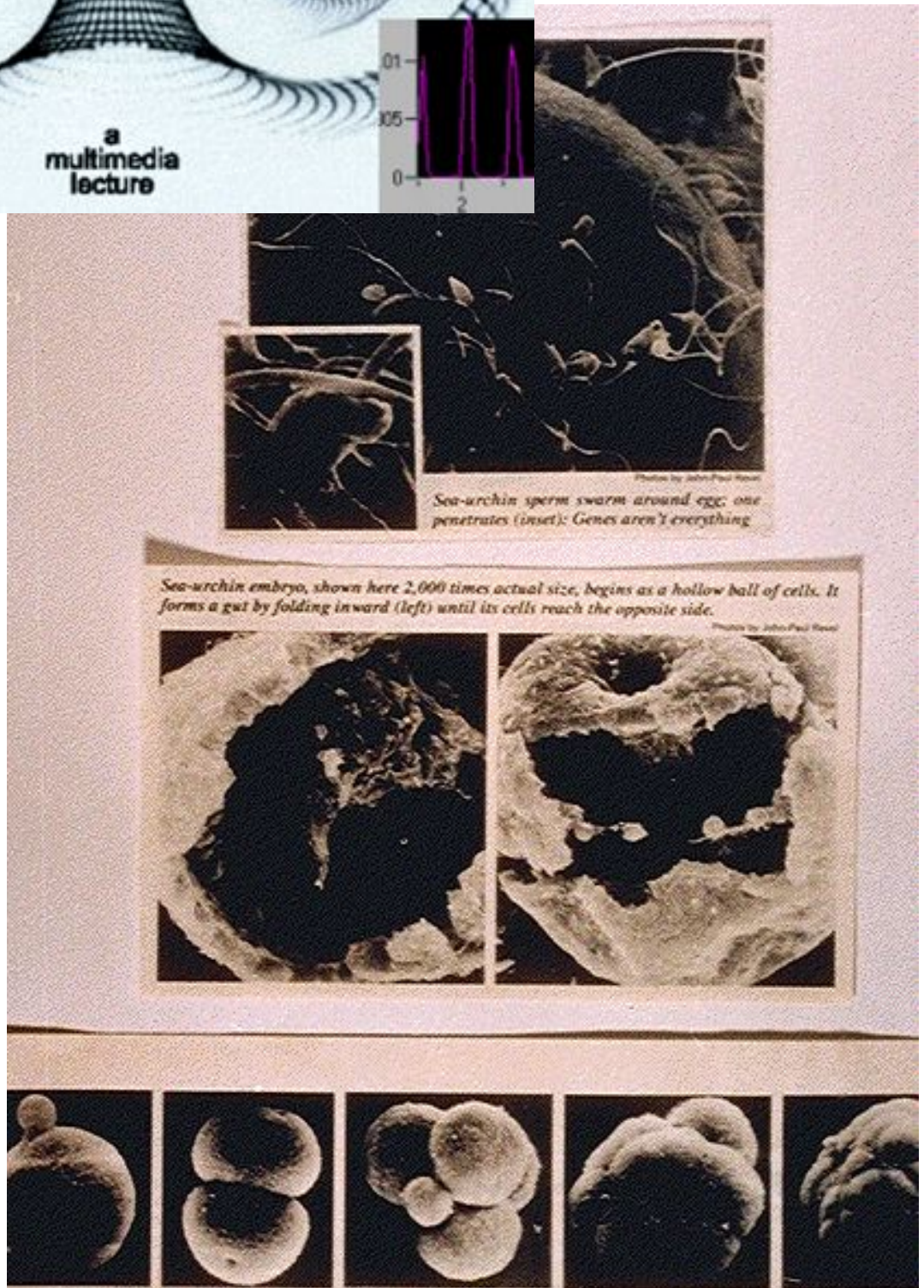
Dan Winter
www.soulinvitation.com

*Dimple
 'sucked'
 In
 recursively*

Biophysics graph
 of the converging
 toroidal voltage
 waves whose
 collective
 compression
 electrify the
 heart.

a
 multimedia
 lecture

Dimple: The place where turning inside out begins. Labyrinths cause magnetism to dimple. A critical genesis of symmetry operations based on KNOWING HOW TO TURN INSIDE OUT - is required to successfully induce magnetism and/or charge to DIMPLE. At the place of DIMPLING - a tornado of charge starts. If the vortex completes the turning inside out process (implosive focus) then everything that enters is SORTED (in 'phase' discipline). (see Implosion as the ultimate way to SORT anything!)
 also:
soulinvitation.com/dimple



Embedability -more - (Idealized Recursion): The ability of a short wave to embed or nest non destructively in a larger one. Similar to Fractality. See how this is IMMERSIVE, in the sense it allows one biological oscillator to enter another. To begin the process is SELF RE-Entry, optimized by PHI, the Golden Mean.. (../physicsofphi/PhysicsofPHI.html

Similar to : Wave geometry which can SURVIVE COMPRESSION NON-DESTRUCTIVELY. This is a geometric wave picture of empathy and compassion. To Inhabit is to Embed, which is the same as “getting inside of” in order to steer. This empathic path actually starts with the electricity of the heart LEARNING TO MAKE THE FRACTAL WHICH STARTS WITH THE ELECTRICAL DIMPLING OR TURNING INSIDE OUT.

Enochian: John Dee sensing more possibility - after learning most languages of Earth - and amassing what may have been the planets best library - requests the angel language. An Ophanim angel knocks on his window - hands him a green stone still available in the British museum. Reasonable clairvoyance could plot the shape (symmetry) shadow of the electrical field domains in that paramagnetic stone - and these are called ALPHABET. This is the physics of the Mormon Urim and Thumin etc. With help Dee learns that recorded in that stone is the sequence of magnetic domain alphabet letter SHADOWS necessary to CALL angelic intelligence whose body of magnetism steers everything from planetary storms to galaxies. Dee was not brave enough to try these calls. This became the mis-understood high magic of Order of the Golden Dawn. ref: soulinvitation.com/ophanim soulinvitation.com/enochian “Support for this idea comes from wide variety of sources. Robert Morningsky (Hopi) and Dhani Wahoo (Cherokee elder) have both identified the Ophanic script as similar to those used by indigenous ET elders, such as the Adawi. The geometrical pattern has been discerned in the mysterious Phaistos disk of Crete as well as on the pieces of Roswell debris. Even the symbols on the Stargate, in the movie Stargate, resembled Ophanic letters.” cc also Vincent Bridges.

Ensoulment- In Winter’s view, DNA makes a worm thru light speed up its core zipper. This is an important descriptor of whether memory will survive death, or dream entry, or shamanic journey. I believe soon we will understand a relationship between implosion hygiene in DNA that knows bliss, and what creates that connection to lightning’s wormhole, and what religion calls SOUL. (really means: SOL - as in - having the GENETIC means to inhabit the SUN.) discussion: soulinvitation.com/ensoulment

Fourier Transform / FFT / Power Spectra- A mathematical technique (involving matrix algebra using done in a computer) to take any complicated waving oscillator and break it down into the difference pure simple single musical notes sine waves - which when put together make up the initial wave. So for example your ear takes this ‘harmonic analysis’ of a piano chord - to see if it is musical or not. (the subtler difference between an FFT and the Power Spectra will not be dealt with here). Power spectra is the complete way of describing again which harmonics or ‘musical tinker toys’ harmonic tensors - are present. (Key to HeartTuner top right screen).

Fusion - point at which many waves can come to phase lock at one “node” / foci. There ALL is sorted. The potential to gather more than 3 oscillating wave systems up to infinite numbers come to ONE point - perfect FUSION - seems to depend on PHI / Golden Ratio wave ratios. Discussion: soulinvitation.com/fusion

Fractal, fractal recursion//Embeddedness/ Fractality: Suppose a short little wave would like to nest cozily and non-destructively on a larger carrier wave. The ratio of that “embedding” or braiding of a short on long wave would be something like the Phi-lotactic branching algorhythm of tree ness. In fact the first fractals looked like fern trees. The ratio of a short wave which can best embed on a long is in Phi or Golden Mean proportion. This is the best nesting algorhythm for waves to share spin non-destructively.

In a computer program, a “do loop” which can nest inside another, inside another, infinitely, could produce infinite recursion, or self-iteration. Irving Dardik calls this expression of a turn inside a turn: “super-looping”.

In a geometric sense when pattern or foldedness can nest inside itself layer in layer, this becomes the fingerprint of fractality.

Fractal - more on - (/fractal attractor): when the small part of a pattern contains a miniature of the whole pattern, it is said to be self-embedded, or recursive. This kind of symmetry among waves, permit the long, to cascade right into the same pattern in the short wave, creating a cascade or vortex or attractor. This IS Ability to Embed; EMBEDABILITY, which is the wave mechanic skill to center yourself in a wave form and steer it= TO INHABIT. (mathematically identical to compassion/empathy)

The self-sameness of the symmetry of the nucleus to the symmetry of the electron shell, for example permits the scalar spin vortex “translation of vorticity”(turning from long to short wave) we call gravity. The inertia which passes inside out through center, gives us identified in the wave lengths out here, the illusion that gravity’s cascade goes only one way. In reality what has been folded inside out into finer order in the center of atoms and planets, in the unified field of gravity’s wave cascade, becomes the bloodstream passed between planets in erotic play. This self-same scalar wave cascade “fractal attractor” by symmetry, also makes up the field nesting we call consciousness, which is born of and defined by recursion itself. The more we are occupied in our attention by the at-first-in-principle of self-embedded IAM THAT I AM, the more the fields of consciousness nest and are leveraged by our “mind”. The purpose of the ONENESS when present in one node of the hologram, draws the inertia of all to it. Thus true power is self-limiting by pure intention (or symmetry) inside itself.

Fractality - more- Amount of self-similarity. When the pattern inside is self similar to the pattern outside. Then the pattern can RECUR and

recur and recur. Example: heart within heart valentine eternal zoom. Example 2: Fern tree looks like 1 branch looks like 1 leaf

looks like 1 leaf tip, looks like....

Fractionation- (as opposite of fractality): when the order of a complex woven kind of self organizing.. anything.. is chopped up into little pieces... which all the kings horses and all the kings men can’t put back together again. Your best picture has no meaning when rendered into little pieces. How can we be nourished after we chop up all the order in our grains and vegetables before we consume them. The long wave order IS the food. Apple sauce has no tingle, only biting into the whole apple adds that kind of spin to you. Among waves, spin is the only catchment for memory. The context of the long wave is not present after the air or the water is passed through a screen or a sieve. It becomes fractionated, unbraided, and lifeless. Fractionation in cultures is called: a-part-meant, and it occurs when the long magnetic grid braids of earth are chopped up by cities where geomancy and grid engineering are unknown. The skin of Earth becomes cancerous this way.

Gene Pools - Everyone into the POOL, the water’s fine. The ocean accepts all rivers, but sets the final level. Because DNA is so implosive, it operates informationally within planetary gravity bubbles like ours, from a common library core. This is particularly true when enough relaxation happens to embed and ground.

Genetic Memory - In sacred geometrics here, emphasis is on memory in genes as storeable BECAUSE fusion / implosion in DNA ‘dodecahedral’ perfect Golden Mean PACKING, creates VERY SHAREABLE WAVES. Think of a lightning bolt down the center zipper of blissful / ensouled genetic material able to keep constant modem contact with the morphic resonance of the whole genome central internet library. Perfect relaxation into embedding yielding hi ‘baud’ (info density transfer) rate to collective mind.

Geometry of Pressure- since the unified field tells us of only one essentially compressible medium, then the universe is literally one contiguous folded surface and a “geometry of pressure”. Tesla called voltage simply tension or pressure. Electromagnetic voltage modulates the three other supposed “separate” and “fundamental” forces of physics. (Even gravity becomes magnetic in the monopole- cascade by ratio). We should not permit our physics to fractionate our awareness into the schizophrenia of imagining more than one substance to our universe. No data ever truly supported the hypothesis that more than one compressible unified field existed in the universe. We can see and feel that we the medium, are the message. -see Compression.

Grok- in the sci-fi sense of to encounter an idea, surround it with your beingness of attention, “consume it’s perspective”, and understand it all at once “of a piece”.. this is the “long wave” way of knowing, as opposed to atomized, piecemeal, fractionated dissections of knowing.. short waves.

Haploidal DNA - Normally cells have a full set of 23 chromosome pairs- BUT in seeds and eggs in humans - their is only one of each pair left - this HALF HELIX concept- seen like a lightening bolt - is called Haploid.

Harmonic- one sine wave or pure tone wave length among many that may comprise anything alive or vibrating (an 'oscillator;') The fun part is ALL oscillators only include sine waves of different lengths. see FOURIER TRANSFORM. - Any wavelength as Ratio to another. Winter refers often to harmonics in the Power Spectrum Analysis - this means which wave lengths or simple single musical SINE WAVE tones - were assembled to make the complex wave (EKG for example) which you are analyzing.

Harmonic Analysis (Fast Fourier Transform and the Power Spectra) - is simply a way of looking at what pure tones - musical notes (sine waves) of different lengths are woven together to produce any complex wave (everything in the universe is a complex wave - made only of pure sine waves of different lengths. Harmonic analysis -synonyms to Power Spectra & Mathematics-Fast Fourier Transform - are ways to get at the frequency recipe for ANYTHING!

& b.) why is this the most precise possible language to describe EMOTION .

c.) How is this practically applied to Spectrum Analyzing the EKG to TEACH coherent Emoting.

d.) More on Sentic and the Musical Language giving RATIO definition to the WAVE SHAPE OF TOUCH

Harmonic Inclusiveness: Originally known in the Heart Rate Variability Literature (HRV) (soulinvitation.com/dardik) to show that the number of different harmonics all present at once in your heart statistically predicted how fast all chronic diseases would LEAVE YOUR BODY! .. but Winter extended this to Harmonic Inclusiveness predicting the viability / vitality of EVERYTHING ALIVE AND OSCILLATING.. (spin density. The number of different field effects spinning at once inside anything stable as a wave, shows up in harmonic analysis. The fun part is - Winter predicts the HARMONIC INCLUSIVENESS - the number of DIFFERENT HARMONICS ALL PRESENT AT ONCE (PERFECTED TO INFINITE BY GOLDEN RATIO) - equals the SPIN DENSITY - AND predicts the VIABILITY (immortality) of ANYTHING ALIVE! (soulinvitation.com/biophoton)

Heterodyning: Quoting Rick Anderson: (partial excerpt from soulinvitation.com/heterophi) "One of Dan Winter's weird and wonderful files caught my attention one day, when I was browsing his web site. He was making remarks about how waves can, when organized in a certain way, spiral inward toward a central zero-point in the same way that Lorenz attractors occur in Chaos theory. Tying together several concepts such as implosion, fractal embedding, compression, and wave (non)-interference based on the fact that Phi-ratioed waves can both add and multiply non-destructively, he wove his tale... My ham radio hobbyist antennas went up... What did he say about "both add and multiply?....

Well, I checked, and it turns out to be very strange but true: Another one of Phi's many unusual traits is that it's the one ratio whose powers, when added together, generate the next higher in the series, automatically. Whoa.

...When you want to broadcast your voice over a radio signal "carrier" wave. To do that, you need to vary the overall intensity or amplitude of the carrier with the lower-frequency voice... you need to modulate the carrier's amplitude with the voice waveform. And the way to do that, mathematically, is to multiply the two waves together, instead of simply adding them. Just like we learned in school that you can multiply numbers by adding their powers or exponents, so when we add wave voltages against a nonlinear (logarithmic) background (in the PN-junction of a diode or transistor), we are actually doing the same thing as if we had multiplied them. Multiplication is nonlinear addition. In radio work this is called **heterodyning**.

So what's Phi got to do with this? (Golden Mean Ratio)

Phi possesses the strange property of being able to automatically generate its power series when heterodyned successively with its own next-higher or lower powers! I believe this fact is a key to many fascinating areas yet to be discovered. As far as I can tell, this trait is not shared by any other number. Dan Winter seems to be on the right track on this one, for sure.

Powers of Phi - $\Phi^0 = 1$, $\Phi^1 = 1.6180339$, $\Phi^2 = 2.6180339$, $\Phi^3 = 4.2360672$, $\Phi^4 = 6.8541004$

Now, what do you suppose happens when we take two frequencies, $f_1 = 1$ unit, and $f_2 =$ a frequency that is Phi times larger, or $f_2 = 1.6180339$, and modulate them-- nonlinearly mix them-- in an AM modulator? The two new frequencies are the sum, which is 2.6180339 -- hey, that's the same as Φ^2 , and the difference, which is $.6180339$ -- hey, isn't that Phi to the -1th power? Yup, it is. So we stumble upon the very interesting fact that

powers of Phi are automatically generated whenever we "heterodyne" or modulate two frequencies that are related by a ratio equal to Phi."

--

Implosion- When waves approach a common concentric place - if their symmetry is based on Golden Ratio as they compress - then their wave speeds (velocities) add and multiply 'recursively'. This effectively turns compression into acceleration - making compression non-destructive. In the process of creating charge acceleration - GRAVITY is created. The reason implosion becomes self-organizing is because the charge is accelerated thru the speed of light - creating the only effective way to sustainability for example for biology's memory. Implosion is the only way to sustain the meeting and phase sorting point for charge - and is therefore the only wave symmetry which accounts for self-sorting and perception itself. The self-similarity or scale invariant quality of implosion becomes the solution to Einstein's dilemma of infinite non-destructive compression, and the problem of cold fusion, and the puzzle of phase conjugate optics. Complex oscillators like the stock market and also brainwave harmonics - both emerge from chaos into self-organization when the musical cascade becomes Golden Ratio - this musical recipe to successful collapse - also becomes the definition of self-aware systems in general. To become self-aware is to self-refer is to self-re-enter is to implode.

Incunabula - A time travel experiment in New Jersey - instructive in the physics of charge compression to accelerate genetic fields thru light speed. Particularly insightful on role of sexual energy.
www.earthportals.com/Portal_Messenger/winter.html

Inertia- the tendency for movement to continue in its path. We measure the amount of inertia stored by waves when persuaded by symmetry to go in circles, and we call this mass or matter.

Inhabit- To RECURrently reenter as a wave. "Breath" of el-eye-PHI. (Similar to - to be able to self refer and thus recur.)

Laminar Coherence- Water, like Grief 'Phi-Lo' dough when sacred, charge dense, and alive, contains a layering sheeting action of order - that means the spin is nested nicely in self-referential spinning layers - Fed by braiding, destroyed by hi pressure, metal contact, hi temperature, pollutants etc. When you knead your bread to bless it - you always ADD FOLD you NEVER TEAR IT!

Lingum: Calcium like exipient (comes out the mouth sometimes) pushed up by the sound current of Kundalini pushing up and clearing out the spine pump canal for bliss.

Lo-phi= love (Long waves in Phi ratio create maximum embedding. To embed in someone outside you as if there were inside - the science of LOVING!) - more - **Lo-phi (love)-** . When the nest of electrical and sound pressure fields around the heart converge in golden mean ratio wave nests, then unlimited information transfer between worlds can cascade. Waves find this arithmetic and geometric heterodyne or beat note non-interference pattern, most touch permissive. EL-(the turn or phase shift) (in)LO-(frequency)PHI-(ratio). The PHI or golden mean ratio has been found in the frequency between harmonics of the heart at the moment of sending love, and (in the "Sentic" measurements of emotion) in the ratio of the moment of maximum pressure in the shape of the hug or squeeze you give to send love. The soft V sound in love suggests the fiveness from whose square root PHI is derived, and from which the wave softness or touchability of love radiates.

Meditation- For the same reason you don't buy a used car from a salesman with shifty eyes - you learn to settle the charge of your attention into total phase lock - rapt-ore. - in order to distill pure (distributable because of coherence) INTENTION. This process of discovering which waves of charge about your body have enough symmetry (coherence) to become sustainably agreeable to each other - is called meditation. **Before you sleep try lying very still after deep breathing - until you feel your body begin to tingle. Notice how your cells are younger after the taste of charge density.**

Merkabbah Tetra Meditation-, The term Merk was originally used for Ea (for whom EArth was named). (Ref. book-'Secret Places of the Lion'). He was called ENKI and also RA the SUN GOD. AB- means FROM. AB-RA means from EA's (Enki) blood line - Ab-ra-ham the father of all religions. (Wife - Sara means ASSA

URU - female dragon.. di-as aur, il uru, uru-shalaim, UR the 'city' of Ab RA ham. The KA was the name for the COHERENCE of you auric charge field -when ordered enough to become navigable. Your KA is your vehicle (hopefully into star entry) from which comes our term Car. Ab-bah (Ab-Ptah) means from EA or from FATHER or from PRESSURE. The only MARK which pressure can make (stand as wave) is the MERKABBAH geometry of perfect field implosion caused by perfect self-awareness / self re entry. The classic star tetra tetra-hedral fire breath meditation leaves your aura primed for parasites - if you do not complete the star tetra cube 32 degree tilt of your head (chin tilt of sphinx) into dodeca. This sets the Golden Ratio into your field (edge ratio of the cube to the newly born dodeca). Do it WHEN you have found something inside which is shareable. Without implosion - you become food for something outside you. ref: soulinvitation.com/merkabbah

Microtubule- The tiny hair like fibres which dance into a beautiful heart shaped array to choreograph the dance of cell division. Stuart Hameroff says they are self-aware. Michael Heleus says their concentric membrane tubes radii are Golden Ratio. Wave guides to implosion do become part of essential self-awareness.

Morphic Resonance- Resonance or information inertia transfer among wave systems which is enabled principlly or **purely by SIMILARITY OF SHAPE ALONE..** (Made famous by Rupert Sheldrake, etc.). For example there is good physics to the witch creating the right kind of doll to effect a human of the same shape. Or a zodiac map of Orion having the shape of major architecture on Giza, causing a bleed thru of powerful energy.. (across spectra.).

Morphology - SHAPE ology. Morph also means to CHANGE shape.. shape 'shifting'. In our unified field cosmology we say since everything is made of the same universal substance, SHAPE (morphology) is the ONLY thing we have EVER had the privelege of NAMING. (Important to remember when you start understanding how the hearts philosopher's stone turns other atoms into gold. / biological transmutation is at heart limited only by the steerage INTENTION provides to waves!)

Non-Destructive Interference- As all waves or frequencies cross each other in the universe, they are not just ships passing in the night. Each time they truly cross paths and "share spin", they have kids. The making of children among waves is called (appropriately) "conjugal" relations. This means they coming into the touch or focus point for two waves, creates a continuous SYSTEM of interference. This is called "heterodyning" or beat note interference. What's neat is that each time waves do this crossing and touching, they must ADD each others wave lengths repeatedly, if the wave lengths of those children waves is to still fit the pattern of the wave nest and not fight. When the continuous repeated adding of the wave lengths is RECURSIVE (able to always RECUR), this effectively means that in addition to adding each others wave lengths (AND velocities), that the waves begin to both ADD AND MULTIPLY each other AT THE SAME TIME. This produces the perfection of this EMBEDDING OR NESTING, which is a BRANCHING PATTERN which is repeatedly PENT (re-pents), in all PHI RATIO. This PERFECT BRANCHING in all PHI ratio in NATURE is called "PHI-Illotaxis, and it the way leaves unfold in plants based on the GOLDEN MEAN, to PERFECTLY SHARE the light. (Later this branch was called SCION, or the Priori de scion.. jon, john.. perfect branching in the blood). So as all waves pack, they must arrange themselves into a symmetry (a pattern) where their inertia, their "nodes" do not cancel each other. In order to get the maximum number of wave nodes or peaks "nested" in ALL CONSTRUCTIVE interference, branching by GOLDEN MEAN ratio- ELIMINATES DESTRUCTIVE ADDING AND MULTIPLYING OF THOSE WAVES. The result is "in-PHI-knit" all CONSTRUCTIVE interference which in the long wave phi ratio (lo-phi wave) is CALLED: "permission to touch" for waves! Note that the wave form for love on the HeartLink and in the Sentic music literature appears to both use the GOLDEN RATIO interval.

Orgone (cloud buster etc.) Wilhelm Reich - correctly discerned that human sexual and biologic charge could be conveyed by properly layered concentric dielectric structures. (Organic vs inorganic for example). He badly isolated himself and alienated science by mis-naming that quality of capacitive charge - as Orgone. It is however true that capacitive charge fields which contain biological intent - have a different qualitative feeling that purely mechanically created ones. However - even this difference shows up beautifully in the spectrum analysis of the charge field dialectrically- (soulinvitation.com/biophoton) where the onset of PHI based recursion differentiates showing the presence of INTENT and infinite connectedness. This is reflected in Reich's useful but limited insight that convex versus concave capacitive structures became projective for this charge. He did not perceive this was the beginning of the symmetry to create self-similar recursion so necessary

to complete the collapse compression of charge into acceleration (projection) - and the MAKING of gravity. As noted elsewhere, his 'Function of the Orgasm' classic thus misses the possibility that conserving orgasmic potential electrically could actually serve a biologic necessity (finding a way for biology out of the mortally fatal condition of being stranded un-sustainably BELOW the speed of light). In other words - Reich did not know the transcendent physics of bliss / tantra and kundalini. (repeating: "suggesting repeated orgasm as cancer prevention is like deciding the only solution to leaky plumbing is lower water pressure").

Para-magnetic Rock or material which bends magnetism COHERENTLY like a lens steers light into ordered pattern. Examples - limestone or quartz based stones - often used for sacred space in matriarchy. As opposed to di-magnetic. stones which FRACTIONATE (break up) magnetic lines like a sieve or a screen. Sandstone for example.. often used in non-touch permissive patriarchal sacred architecture.

Phonon Ponytail - when sound travels in liquid it is call a phonon wave. When the heart sounds trails thru living cells it leaves eddy's in the liquid current which are literally the decision tree for DNA braiding.. which looks like a loving pony tail, when there is love. DNA's decision tree selecting which codons get access to replicate, is therefore literally a (n emotional) matter of the HEART!

Phonon Wave: Sound traveling in liquid (like the sound of the heart traveling in glands and cells for example).

Piezoelectric: Refers to the electrical quality of certain helical structures (quartz and DNA for example) - which because they act like a 'slinky' - they convert MECHANICAL PRESSURE (called stricture) to electrical voltage. In a way you could oversimplify and say the helix connects sound to light - by virtue of the way the slinky connects the long wave (pressure - sound of heart for example) to shorter wave voltage. Visualize the ends of the slinky when pulled out - cause the sides of the slinky (the shorter wave voltage) to pull IN just a little bit. Thus - the slinky is a mechanical way for nature to couple: LONG WAVES TO SHORT WAVES. Can have VERY profound implications if understood in DNA's ability to translated the sound pressure of emotions ('phonon') into voltage waves in the cells programming.

Phase Conjugate Mirror- A split laser beam is steered back into annihilating itself. If the medium it meets in is 'non-linear' (molecular self-similarity) - then that mirror surface bounces all light back onto its own angle of incidence - creating negative time, negative gravity etc. Spin path required for perfect conjugation is perfect implosion. See implosion. 3D animation: vector path for light beams - see pine cone shape in soulinvitation.com/grail.html

Phi / Golden Mean- The ratio series618 (033989...), 1.0, 1.618..., 2.618..., etc. Progression can be derived by adding any two numbers to reach the next OR by multiply any number by 1.618... to reach the next. The only possible ARITHMETIC (adding) and GEOMETRIC (multiplying) progression. Produces perfect growth path (PhyLotaxis), and Golden Mean Spiral. Main subject of all geometry in Winter's work.

Phi-Cycle = physical (When cycles are in PHI ratio they create compression - or density: thus 'Let's get PHiCycle / Physical means to get grounded or embedded - to meet where the waves converge.)

Philotaxis - (Phylotaxes) Refers to perfect branching in nature. 1,2,3,5,8,13 etc. Leads to GoldenRatio, Creates perfect UNpacking - and therefore perfect PACKING. From the point of view of the leaf- learning to SHARE the light - it is MAXIMUM EXPOSURE , MINIMUM SUPERPOSITION.

Phire: Winter's name for FIRE: implying the role of Golden Mean Ratio (Phi) in sustaining the flame. (see Implosion). "Mind Inhabits PHire".

Psychokinetic- refers to thoughts and emotions which effect matter directly. Able to bend waves (steering implosion) with your mind.

Radiant Charge (Life Field)- when the emission path for charge or capacitance (or sound or light or... any spectra).. look like the Sufi heart within heart with wings (see animation), the radiance of that charge can continue forever with no inherent resistance. Acheiving this 'perfect INSIDE is the OUTSIDE', as the mechanism of bliss, is a teachable SYMMETRY skill in how the heart learns to shape it's field. Here fabricating perfect IMPLOSION makes a fire that consumes only what is NOT shareable, and becomes the

PHIRE mind 'inhabits'. When you see someone radiant, think: 'was it great caring about others' that lit the fire which sustained itself? How is the electrical solution to radiance the SAME as the psychological one?

Recursive / Recursion: In a computer program - when an instruction in the sequence calls for the program to put the sequence of actions within itself within itself... SEE FULL PAGE PICTURE->**Recursive or recursion:** (see also non-destructive wave interference): When any system or wave is taught to re-enter itself in such a way that it keeps coming back to the same center point, that steering for spin pattern, is said to be "able to recur". Thing of the little bit of magnetism coming out the top of your heart like a squeezed beet. When the magnetic squirt gun learns how to send the head of its energy worm back down around the vortex donut in such a way that it is never lost on the spin path back into itself, it is then "self-embedded", or RECURSIVE. (See ANU/Heart/Heart of Sun 7/5 spin perfect implosion slop knot clairvoyance maps ../heartsun/HeartofSun.html This in-side out skill to steer a wave back into itself is also called SELF-reference. This is the wave geometry of self awareness. A golden mean spiral is the only way a wave can re-enter ITSELF non-destructively. So to recur and thus self-reenter self-aware, is the skill to make magnetism squirt into that perfect GOLDEN MEAN valentine.. the EM(bed)PATH.

Ritual- What a short wave does in order to become part of longer wave - DNA dancing during cell division is a good example. The result is charge enveloping and distribution. Another example might be the Sun toasting all living DNA on Earth as part of her orgasmic compression (The solar maxima called RAPTURE by Christians) in order to discover which genes can steer her.

Scale invariance- shapes like the Russian dolls - or the layers of an Onion which do not change during compression. Critical to surviving compression - into acceleration and sustainability. All Earth structures not scale invariant will probably be destroyed by heat during SOLAR maximum.

Self-Not/Self- Has been used to describe the membrane of separateness or the cell wall or the human skin, which make up the immune system. As a wave mechanic, all dividing membranes are comprised of woven fields whose phase coherence or wave order determines how long till the bubble pops. Add spin and you add life to the bubble. The index to which spins can be added to the surface of a bubble, is which spins can be superposed on the surface of symmetry itself. Forests get a sonic skin when the bioacoustic habitat contains ALL frequencies. Emotions missing from the spectra of the cell membranes surface, tell us which wave length doorways are unlocked in the self-not self.

The Mathematical name for the principle that cell membranes are composed of only the waves which "make music"/phase lock, together, is called "Structural Stability and Morphogenesis". In human terms this means that membranes- self/not-self are neat woven blankets which occur when the waves of emotion/feeling nest in harmony. Practically, this means that if there is one harmonic missing from your voice ("Signature Sound Works"), or one harmonic missing from your brainwaves (Marty Wuttke/the end of addiction), or one emotion missing from your choice of what you can FEEL, then there is a hole in your blanket, or rather, cell membrane.

Self-Reference/Self-Awareness- You were getting angry, then you became aware, that you were AWARE you were getting angry... then you became aware that you were aware that you were aware.... you were getting angry. Each time you got outside yourself to look at your self, you got more perspective or context in your understanding of your own anger. As a result you had more ability to steer the direction of your emotion with a large horizon of awareness.

The only angle at which a wave can re-enter itself or refer to itself non-destructively is the phi spiral. This then is the optimal geometry of self reference or self awareness. It becomes measurable in the magnetic angle of the hearts "wings" at the moment of compassion or embedding. It becomes evident in the PHI harmonics of the brain and heart at the moments of peak awareness.

Sentics- Manfred Clynes (microsoundmusic.com) book and work on the SHAPE of the PRESSURE wave of TOUCH which IDENTIFIES EMOTION globally. Touch the violin string in the right way, people weep when you play. Winter did a geometric analysis of Clynes waves to simple sacred ratios at soulinvitation.com/touch

IN ORDER FOR ALPHABET LETTERS TO WORK AS LITTLE REPRESENTATIONS OF BIG OBJECTS, EACH LETTER MUST BE A PERFECT "LITTLE FRACTAL".. SO THE LITTLE SHAPE OF THE SYMBOL IS A FRACTAL "ZOOM SHOT" OF THE BIG OBJECT IT REPRESENTS. THIS EQUATION SHOWS THAT THE GOLDEN MEAN SPIRAL MAKES THE BEST RECURSIVE FRACTAL PATH TO CONNECT BIG TO LITTLE. STAN TENEN'S BIG MISTAKE IS NOT ACCEPTING THAT THE GOLDEN MEAN SPIRAL HAS TO BE THE BEST WAY TO MAKE SYMBOLS AND PERMIT OUR SYMBOL SHAPES TO EMBED OR NEST IN THE WORLD

After receiving my original book and assembling my model of the unpacking of the tetrahedron in his lab, Stan Tenen invited me there. During that visit, witnessed by Lorin Kiely and Stephanie Sutton, Stan Tenen kept insisting that he had not determined the critical part of the geometric keys to the self organizing alphabet of symmetry. This was WHAT mathematical spiral to use around the self-organizing donut, and how to model it in computer. I knew at that time that the Golden Mean spiral was the most self-evident solution to the problem of self-organization. I also knew that the Golden Mean spiral best solved the problem of embeddedness or nestedness, which was what symbolic alphabets needed to be in order to make true "morphic fractal" shape pictures of objects outside your head.

For example, consider the re-entry form:

Louis Kauffman's: "Self-Reference & Recursive Form".

$$\left[1 + \frac{1}{\left[1 + \frac{1}{\left[1 + \frac{1}{\dots} \right]} \right]} \right]$$

Here, we use the arrow to indicate the point of re-entry, a possible nuance of meaning for the original self-pointing arrow. The notation with brackets and arrow line pointing to specific locations of re-entry is used recursively with the first convention: the sign of enclosure is erased.

EXHIBIT C

Thus, in the case of the continued fraction we have the recursion

$$F(\curvearrowright) = F([F(\curvearrowright)]) \quad \left[1 + \frac{1}{\left[1 + \frac{1}{\left[1 + \frac{1}{\curvearrowright} \right]} \right]} \right]$$

and corresponding sequence of numerical approximations

$$1, \quad 1 + \frac{1}{1}, \quad 1 + \frac{1}{1 + \frac{1}{1}}, \quad 1 + \frac{1}{1 + \frac{1}{1 + \frac{1}{1}}}$$

and in the limit

Dan Winter- on **RECURSION**
in his paper describing his unique PHI mathematics derivation of the Hebrew Alphabet.

$$\left[1 + \frac{1}{\left[1 + \frac{1}{\left[1 + \frac{1}{\dots} \right]} \right]} \right] = \frac{1 + \sqrt{5}}{2} = \text{Phi Golden Mean (1)618...}$$

$$\left[\curvearrowright \right] = \left[\left[\curvearrowright \right] \right] = \left[\left[\left[\curvearrowright \right] \right] \right] = \dots \quad !$$

"This is a mathematical image of the condition of PURE SELF-REFERENCE"

Ref: Merrell-Wolff, 1976, in Louis Kaufmann's "Self-Reference and Recursive Forms".

The formula for the Golden Mean Spiral is the "image of the condition of pure self-reference", or self-embeddedness. This has to be the correct shape to permit symbols, letters, to embed us in our world. Because Stan Tenen chose not to use this shape to create letterforms, his work is fundamentally flawed.

Septrum (see Cepstrum)

Shareable - able by nature to be distributable... in the psychological sense - an emotion which could be shared 'non-destructively' as in perhaps a very universal perspective, and in the related physical sense a wave form which by it's nature could be passed without resistance among all the rest of the waves of the universe... in essence: pure symmetry. Note this requirement to reach essence and shareability seems to imply necessarily: perfect compressibility!

Slipknot - knot theory becomes consciousness theory as recursion learns to hold a wave shape.. "Kauffman" work Univ Chicago, etc. Essentially if you can see the wave shape as a boy scout variety sustainable slip knot, chances are you have the chutzpah to do it with the ethers in your heart to so create matter out of light: "slip (k)not cosmic donut maker". (Most people know what a slip knot is, however knot theory becomes profound pure wave principle of creation when we understand that this is how waves get enough of themselves going into rotation to store inertia - the ONLY way to CREATE mass... or ANYthing!).

Spin Density. The number of different field effects spinning at once inside anything stable as a wave, shows up in harmonic analysis. The fun part is - Winter predicts the HARMONIC INCLUSIVENESS - the number of DIFFERENT HARMONICS ALL PRESENT AT ONCE (PERFECTED TO INFINITE BY GOLDEN RATIO) - equals the SPIN DENSITY - AND predicts the VIABILITY (immortality) of ANYTHING ALIVE! (soulinvitation.com/biophoton)

Spin, spin path. Rotation is the only way waves create both mass (inertia storage) and time (relative rotation measured). The universe is made of nothing except waves spinning.. the fun part is discovering self-awareness born when waves learn the PATH TO SPIN - back into them selves- to feed their own tornado. (See tornado steering in book).

Star Penetrating (STARGATE) - The same symmetry cookbook for waves getting 'screwed in right' to go thru stars, which were the glyphs in STARGATE movie, are the true Enochian alphabet. The gravity furnace in star cores is the only effective star entry slingshot available for gene/gland magnetics gone faster than light (souls). Once we know perfect recursion/embedding solves Einstein's dilemma of perfect implosion, we shall have the map to all heart's of gravity. Recommend keyword search on 'landscape zodiac' for examples of how star penetration is aided by magnetic maps on the land - sacred space as morphicly universal / archtypal.

Star Portals- Where Magnetism dimples, compresses, accelerates, turns inside out. Similar to wormhole. Examples: Deep Space Nine, Phaistos Disk, The letters from Enochian used in the movie STARGATE - to MAKE the gate. (By angling flux lines correctly to navigate implosive compression non-destructively).

Star Mother Kit- A zen experience of assembling the most profound possible sacred geometry. You begin by assembly a **green pair star tetrahedra / star of david. Then you assemble a cube around that, a dodecahedron around that, then stellate (PHI extend all edges straight out) to icosahedron, then! stellate that -AGAIN by PHI extending all edges straight out to the ultimate embedding recurring 3D fractal dodeca!** soulinvitation.com/tools heartcoherence.com soulinvitation.com/kit

Stellation- When you extend the straight outer line edge of one icosahedron STRAIGHT OUT from both ends by GOLDEN RATIO - you make a dodeca. Then do the same thing again on the dodeca - **you make icosah!** That is called STELLATING. Imagine you were extending the lines on each face of the icosah to add a triangular hat or cone, then putting a similar but pent hat or cone on each pent face of the pentagonal dodecahedron. **Best understood by seeing or better building - the star mother kit.**

Sub atomic level - smaller than atoms. (Referring mostly in sacred geometry studies to pure geometric models of the symmetries which link bosons - items inside the nucleus. Chemist Moon for example at Univ. Chicago showing the parts inside the nucleus arrange themselves like the platonic solids, even like the shells of the electrons...)

Superluminal DNA. various studies (William Pensinger & others soulinvitation.com/superDNA) suggest DNA propagates electrical fields measurably faster than the speed of light. This fits Winter's hypothesis that DNA is self-similar and braids electrically to implosion.

Sustainable Wave - patterns among waves (in other words everything that is), which by virtue of symmetry - keep on waving / last forever. Sustainability in architecture for example, ultimately is a pure symmetry issue of how to make ALL structural interference NON-destructive. (Clearly points to self-embedding as the ONLY way architecture OR data EVER become perfectly compressible and THEREFORE sustainable.)

Tingle- What you are supposed to FEEL when you put your attention in your little finger. If you attention delivers implosive CHARGE DENSITY - by leveraging waves into agreeing on a meeting point - then you qualify to begin the bliss dance. The same electrically potent physics of charge delivery into a TINGLING field effect of presence - (implosion created by mind among waves learning to persuade waves into agreement) - predicts the soon arriving day you will bend and steer stars with the same force of attention. Kind of makes you TINGLE to think about it doesn't it.

Torus Donut- The figure 8 rolled into 3D makes a donut shape field effect - which is a subset of every shape in physics. The donut shape in science is called TORUS - In hydrodynamics (the science of how fluid flows) the torus donut is the only shape which is self organizing. Learn how to tilt them into nesting - and presto you are divine creator of the whole atomic table.

Unpacking - only certain shapes can unfold perfectly forever - consult a rose for details, then steer your heart accordingly?

Volt: Name for electrical pressure or tension. (Hydrodynamic pressure model of electrical circuits is literal according to Winter). (**versus AMP**)

Vorticity - The study of what happens to all waves shortly after you pull the plug in your bathtub: a vortex forms. The shape of where each molecule goes in a path down the vortex throat is a rich study in 'how vorticity TRANSLATES movement' from a line in one plane to a circle in a perpendicular one. The perfect way to do this is GOLDEN MEAN ("yellow brick road to oz") and in my view originates the fine structure constant.

Waveguide- The best microwave amplifier found for hi gain to pick up the microwaves which measured kundalini from the spines ATP - was an etching off a pyramid wall... Which Callahan says is steering microwaves for insect navigation. Now THAT is a waveguide. Want to learn hi ceremonial magic - symbol function - study microwave amplifiers / waveguides. What is a wave guide? Everything.

Wormholes, String Theory, Song Lines, Dreaming Tracks, Shamanic time tunnels - Their physics (symmetry) IS their psychology: When charge tornados well into recursion - it create long COHERENT and penetrating little twisters. These are how mind / consciousness /self-awareness penetrate thru the speed of light into gravity making time travel. It begins that electrical self similarity fabricates information rich charge compression - that gives rise to the electrical phenomenon we call mind or awareness - which inhabits and preys on centers of charge implosion - Until - genetic evolution into consciousness learns to pay it's debt to the gravity of that recursion on fire, and begin generating the gravity making self-centering force of self-awareness that holds these gravity charge wind tornados TOGETHER between atoms, between villages, and then between stars.

Wratchet- DNA is a 'wratched dodecahedron' This means the dodeca shape has been stepped down a spiral staircase like slinky. Ten times the dodeca stops each full turn while falling down a spiral stair. This marks the symmetry of DNA - a DODECA which has been spun into a symmetry in the next axis of spin (next dimension).