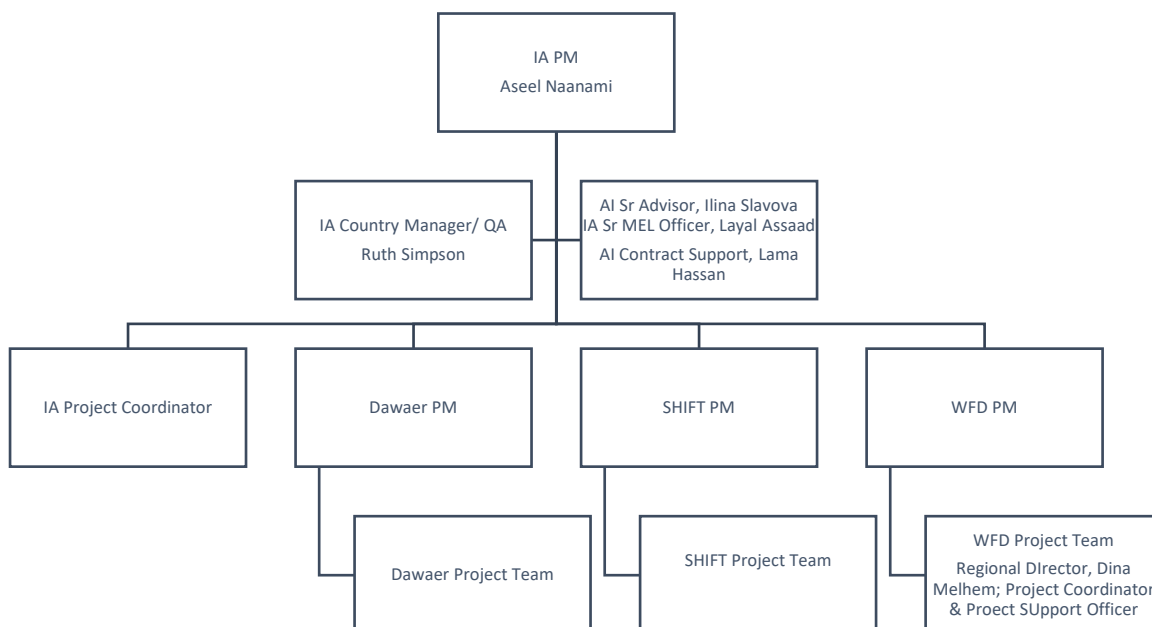


8. Resources - Personnel

The Consortium Brings together the expertise of the Partners, with Team Members specialised in youth political participation, skills building, dialogue, project and contract management and MEL. Each Consortium partner will supplier the necessary human resources for high quality management of this Project.



International Alert Project Management, QA and MEL

The information on Key Personnel from Alert to provide effective Contract management and quality delivery of services with a focus on impact (through MEL) are listed attached as CVs

International Alert applies a RACI model of project management to ensure that *roles, responsibilities, reporting lines and accountabilities* are clearly defined and understood across the research team and to ensure a consistency of high-quality, ethical and gender sensitive research across the board. This model delineates parties and individuals who are **responsible** and **accountable** and who need to be **communicated with** and **informed**. A full RACI matrix will be developed with partners as part of the inception workshop.

Project management controls: The PM is responsible for setting up a detailed workplan and budget forecast, monitoring and updating them regularly. Spending is tracked on a monthly basis with the country office completing internal financial reports, and the Finance Team from the head office validating Detailed Transaction Reports (DTRs) listing all transactions and project/ fund codes. Apart from financial control, projects have corresponding M&E plans and reporting schedules that allow for tracking of progress, context monitoring and registration of any delays or adjustments required.