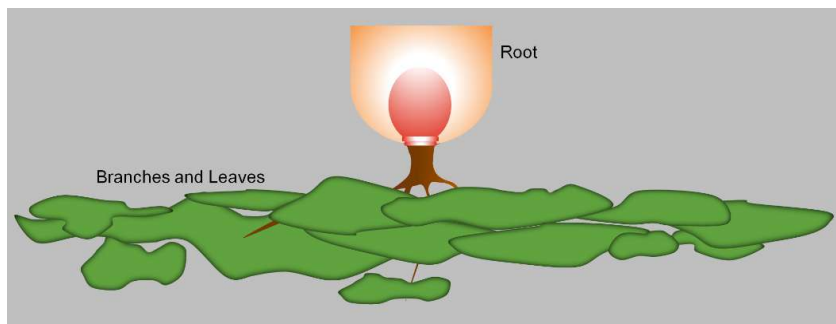
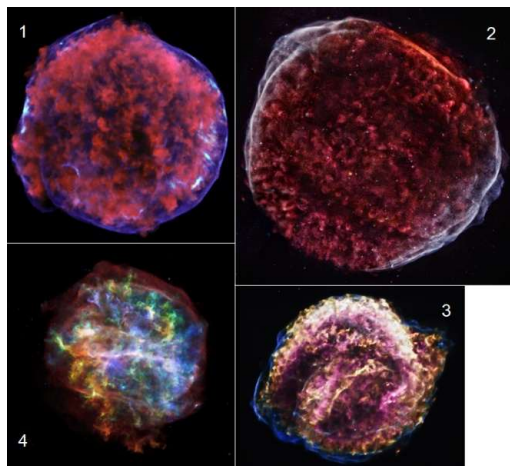


This Heavenly structure is called *Aśvatthaḥ* in the *Kaṭha Upaniṣad* (ii.3.1). *Aśvatthaḥ* is the inverted tree or Vedic Tree of Life. The root is the Heavenly Vault, with the Stone (the celestial ioniser is called 'the Stone' in the *Ṛgveda*), and the Soma Pond, which produces and pours out celestial Waters, cosmic plasmas. The Branches and Leaves represent the Milky Way, the Regions of Life. (It is a schematic diagram and NOT to scale).

The galactic structure itself, according to the *Ṛgveda* and the *Kaṭha Upaniṣad*, is eternal and imperishable. Within it rest all the worlds, the innumerable solar systems like ours.



Cosmic plasmas are produced by this Heavenly structure and matured in the Soma Pond, and discharged and released by Our Creator's Wonderful Machine to sustain our Milky Way Galaxy three times a day every day. The following figure shows the growing and maturing plasma blooms in the Soma Pond.



The Soma Pond Mapped by Scientists of the Chandra X-Ray Observatory. Images are NOT on the same scale.

1. *SN1572 (Tycho Supernova Remnants)*, about 55 light-years across. Image credit: X-Ray: NASA/CXC/ Rutgers/K. Eriksen et al. Optical: DSS.
2. *SN1006 Supernova Remnants*, about 70 light-years across. Image credit: NASA/CXC/ Middlebury College/F. Winkler.
3. *Kepler's Supernova*, about 19-33 light-years across. Image credit: NASA/CXC/SAO/D. Patnaude.
4. *Cassiopeia A Supernova Remnants*, 29 light-years across. Image credit: NASA/CXC/Penn State/S. Park et al.

When these plasma blooms are fully matured, they tear the wrappings (shown in misty white, blue, and white) and released. The following figure shows the cosmic plasma discharge and release mechanism.

