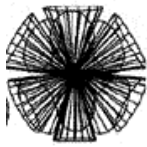


Revelations *Of the Heart* Glossary of Terms

The heart energetics effect the immune system and the environment. Therefore the more sustainable these heart "waves" are, the more effective one can be in bending their environment. Making one's heart "waves" sustainable, that is: able to reach further without collapsing as waves. Heartlink" is a tool to measure this "coherence", and feed it back in such a way as to make it teachable.



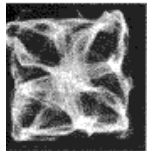
Anu - ultimate subatomic particle, depicted clairvoyantly in theosophy, (5 spins inside, 7 spins outside, perfect little heart shaped 'slip knot') latter seemingly justified to current subatomic physics, morphically resonant (identical shape?) to human heart, and heart of the sun's PURE SHAPE.



Shareable - able by nature to be distributable... in the psychological sense - an emotion which many could be shared 'non-destructively' as in perhaps a very universal perspective, and in the related physical sense, a wave form which by it's nature could be passed without resistance among all the rest of the waves of the universe... in essence: pure symmetry.



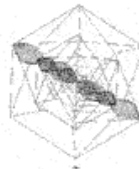
Slipknot - Essentially the wave shape as a boy scout variety sustainable slip knot. Knot theory becomes consciousness theory as recursion learns to hold a wave shape with the ethers in your heart so to create matter out of light... "slip (k)not cosmic donut maker". Knot theory becomes profound pure wave principle of creation when we understand that this is how waves get enough of themselves going into rotation to store inertia - the ONLY way to CREATE mass... or ANYthing!).



Morphic-Resonance - Resonance or information inertia transfer among wave systems which is enabled princply or purely by SIMILARITY OF SHAPE ALONE.. (Made famous by Rupert Sheldrake, etc.). For example a zodiac map of Orion having the shape of major architecture on the Giza Plateau in Egypt, causing a bleed thru of powerful energy.. (across spectra).



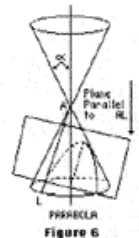
Sub atomic level - smaller than atoms. Referring mostly in sacred geometry studies to pure geometric models of the symmetries which link bosons - items inside the nucleus. The parts inside the nucleus arrange themselves like the platonic solids, even like the shells of the electrons.



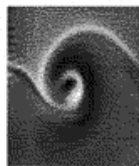
Penetrate Stars - The symmetry cookbook for waves getting 'screwed in right' to go thru stars. The gravity furnace in star cores is the only effective star entry slingshot available for gene/gland magnetics gone faster than light (souls). Once we know perfect recursion/embedding it will solve Einstein's dilemma of perfect implosion, we shall have the map to all heart's of gravity. Star penetration is aided by magnetic maps on the land.



Phonon Ponytail - when sound travels in liquid it is call a phonon wave. When the heart sounds feelings thru living cells it leaves trails of eddy's in the liquid current which are literally the decision tree for DNA braiding.. It actually looks like a pony tail braid, when there is love! DNA's decision tree selecting which codons get access to replicate, it's therefore literally a (n emotional) matter of the HEART!



Morphology - SHAPE ology. Morph also means to CHANGE shape. Shape 'shifting'. In our unified field cosmology we say since everything is made of the same universal substance, SHAPE (morphology) is the ONLY thing we have EVER had the privelege of NAMING. (Important to remember when you start understanding how the hearts philosopher's stone turns other atoms into gold. Biological transmutation is at the heart limited only by what steerage INTENTION provides to waves!



Vorticity - The study of what happens to all waves shortly after you pull the plug in your bathtub: a vortex forms. How each molecule goes in a path down the vortex tunnel and it's end shape is a rich study in how vorticity TRANSLATES movement from a line in one plane, to a circle in a perpendicular one. The perfect way to do this is with the GOLDEN MEAN SPIRAL the fine structure of constancy.



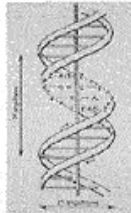
Unpacking - only certain shapes can unfold perfectly forever - consult a rose for details, then steer your heart accordingly.

Revelations *Of the Heart* Glossary of Terms

The heart energetics effect the immune system and the environment. Therefore the more sustainable these heart "waves" are, the more effective one can be in bending their environment. Making one's heart "waves" sustainable, that is: able to reach further without collapsing as waves. Heartlink" is a tool to measure this "coherence", and feed it back in such a way as to make it teachable.



Fusion - point at which many waves can come to phase lock at one "node". Where ALL is sorted. The potential to gather more than 3 oscillating wave systems up to infinite numbers come to ONE point - perfect FUSION - seems to depend on PHI / Golden Ratio wave ratios.



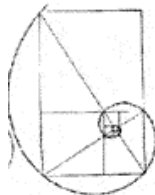
Genetic Memory - In sacred geometrics here, emphasis is on memory in genes as storeable because fusion / implosion in DNA creates VERY SHAREABLE WAVES. Think of a lightning bolt down the center of blissful, ensouled genetic material able to keep constant contact with the morphic resonance of the whole genome library. Perfect embedding yielding high information transfer rates to the collective mind.



Squeeze - dynamics of all wave systems (all creation), seems to be rigorously describeable as pressure changes in a universal 'jello' (ether). So how the pattern of "good compression" among those waves becomes cookbook to create ANYTHING. Key implication here: WHY shared compassion is IDENTICAL to perfect compression.



Sustainable Wave - patterns among waves, which by virtue of symmetry - when they keep on waving they will last forever. This is (in other words) everything that is physical and non-physical matter. Non-Destructive pure symmetry, (This points to self-embedding as the only way matter or data ever become perfectly compressible and THEREFORE sustainable.)



Charge Radiant - when the emission path for energy or capacitance, ie; sound, light, love or....any other spectra).. looks like the Sufi heart within a heart shape with wings. The radiance of this type of charge can continue forever with no inherent resistance. Achieving this 'perfect INSIDE as the OUTSIDE', is the mechanism of bliss, and is teachable. Quite simply it's how the heart learns to shape it's field.



To Inhabit: To RECURrently reenter as a wave. "Breath" of el-eye-PHI= (LIFE). (Similar to - to be able to self refer and thus recur.)



Gene Pools - DNA is so implosive, it operates based on information within planetary gravity bubbles like ours, from a common library core. This is particularly true when enough relaxation happens to embed and ground. Example: The ocean accepts all rivers, but sets the final level.



Fractality - Amount of self-similarity. When the pattern inside is self similar to the pattern outside. Then the pattern can RECUR and recur and recur. Example: A fern tree looks like 1 branch looks like 1 leaf looks like 1 leaf tip, looks like....



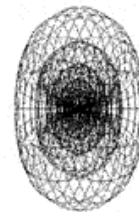
Compassion / Compression - Getting the information pattern of a feeling outside your body to share a space non-destructively with an electrical feeling inside of your body, becomes ultimately (& 'topologically inside out'), a simple problem of perfect COMPRESSION. We can now TEACH the HEART harmonics how to create the 'embedable' Golden Mean harmonics at BLISS / compassion moments!



Coherence -When the light waves in a laser get 'aligned' like soldiers walking in step, it makes them able to travel further together since they lose less 'spin' on the way. Heart's get electrically COHERENT when magnetic emotion gets COHERENT. Heart bio-feedback measures and teaches this skill.



Chaos - what happens when waves have no boundary conditions. (disorder / opposite of awareness / unable to recur). Versus: Fractality - what happens when waves survive the ultimate boundary condition = infinite compression.



Ensoulment - DNA makes a worm hole (Black Hole) thru light speed up its core zipper. This is an important descriptor of whether ones memory will survive death, or dream reentry, or shamanic journey. Understanding the relationship between implosion hygiene in DNA that knows bliss, and what creates that connection is the definition of what religion calls SOUL. Soul (really means: SOL= GENETIC means to inhabit the SUN.)