



8

7











01 02 03 12

01 02 03 12



17



BUSHMASTER
L534858
CAL. 223-5.56MM
MOD. XM15-E2S

B.F.
WINDHAM, ME.
U.S.A.

SAFE
FIRE



9

10





11





11

12

13



9

10

11

12
12



13
13

01 02 03 12



14

Clipboard with papers

14













Small white label on the wooden door with illegible text.

Small white label on the floor with illegible text.

Small white label on the tiled wall with illegible text.

Celebration of World Arts!



Greetings

Japanese
Konnichiwa!
Hello

German
Guten Tag
Good Day

Spanish
Hola! Como estas?
Hello, How are you?

French
Bonjour! Enchanté
Hello, nice to meet you

Hindi
Namaste
Hello or goodbye

Dutch
Hallo, hoe gaat het ermee?
Hello, How are you?

Mitten
and
Hat Drive







Greetings



Japanese
Konnichiwa
Hello

Colombia

Ochonia
owl bird

Burkina Faso
Djembe

Hawaii, USA
se flute
(aka)

Australia
clom ticks

Egypt
goblet dr

Hawaii, USA
11.5468



Jamaica
bam guiro
chax



Greetings

Japanese
Konichiwa.
Hello

German
Guten Tag
Good Day

Spanish
¡Hola! ¿Como estas?
Hello, How are you?

French
Bonjour! Enchanté
Hello, nice to meet you.

Hindi
Namaste
Hello or goodbye.

Dutch
Hallo, hoe gaat het ermee?
Hello, How are you?

Mitten
and
Hat Drive





HELP PROJECT EAGLE
HELP KIDS IN NEED

PROJECT EAGLE
LTCO 2010

COLLECT
SMALL BAGS, BEARS, BOOKS & BASICS

DEC 3-14, LOBBY



THE HOLIDAY GIFT SHOP
IS COMING TO OUR SCHOOL

DATE: December 14-15
TIME: 9:00-11:00am
PLACE: Lobby

GET THAT SPECIAL GIFT FOR EVERYONE!
ON YOUR LIST

FUN









INCHES 1 2
CENTIMETERS 1 2 3 4 5
846

THE GREAT



INCHES 1 2

BH 7

METRIC 1 2 3 4 5



COUNTRIES







18
CAFETERIA





EXIT





01 02 03 12

01 02 03 12

01 02 03 12

15



01 02 03 12

01 02 03 12

01 02 03 12

01 02 03 12







INCHES 1 2
10
METRIC 1 2 3 4 5





INCHES 1 2
BH 11A
METRIC 1 2 3 4 5





INCHES 1 2

BH 11

METRIC 1 2 3 4 5

01 02 03 12

01 02 03 12

01 02 03 12

03 06 12

01 02 03 12



03 12



01 02 03 12

g
is about _____
ter actions. *
cter's likes and dislikes #3
en
ref.



01 02 03 06 12

03 06 12

01 02 03 06 12

03 06 12

03 06 12



03 06 12

03 06 12

03 06 12

03 06 12

03 06 12

01 02 03 06 12

03 06 12

03 06 12

03 06 12

01 02 03 06 12



03 12

01 02 03 06 12

03 06 12



6

RECEIVING AREA

Room 6000

49

Welcome
Learn with us!





01 02 03 06 12

01 02 03 06 12

01 02 03 06 12

03 06 12

03 06 12

03 06 12

03 06 12

03 06 12

03 06 12

03 06 12

03 06 12

03 06 12

01 02 03 06 12

01 02 03 12

01 02 03 12

01 02 03 12

01 02 03 06 12

01 02 03 06 12

01 02 03 12

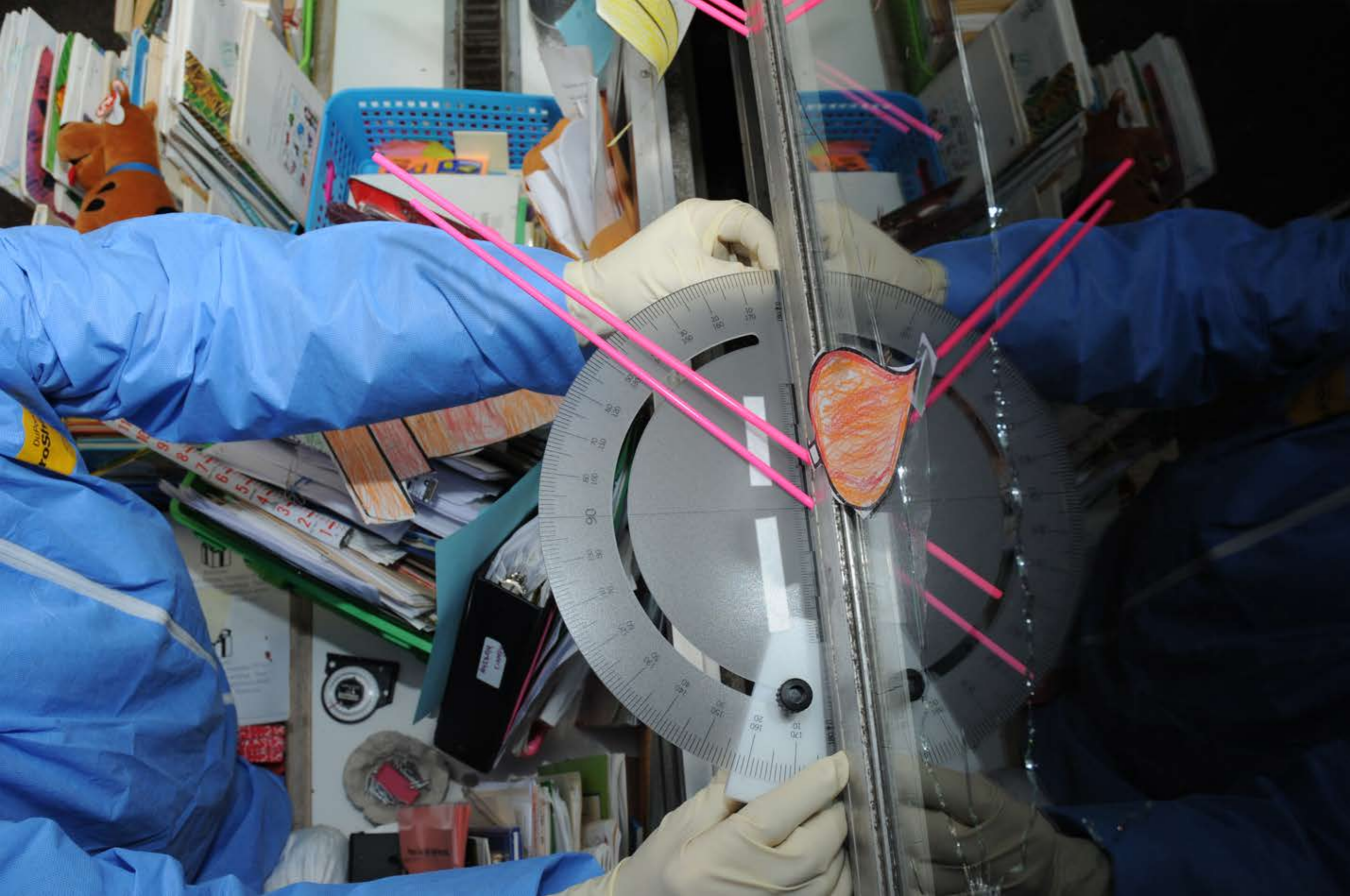
01 02 03 06 12

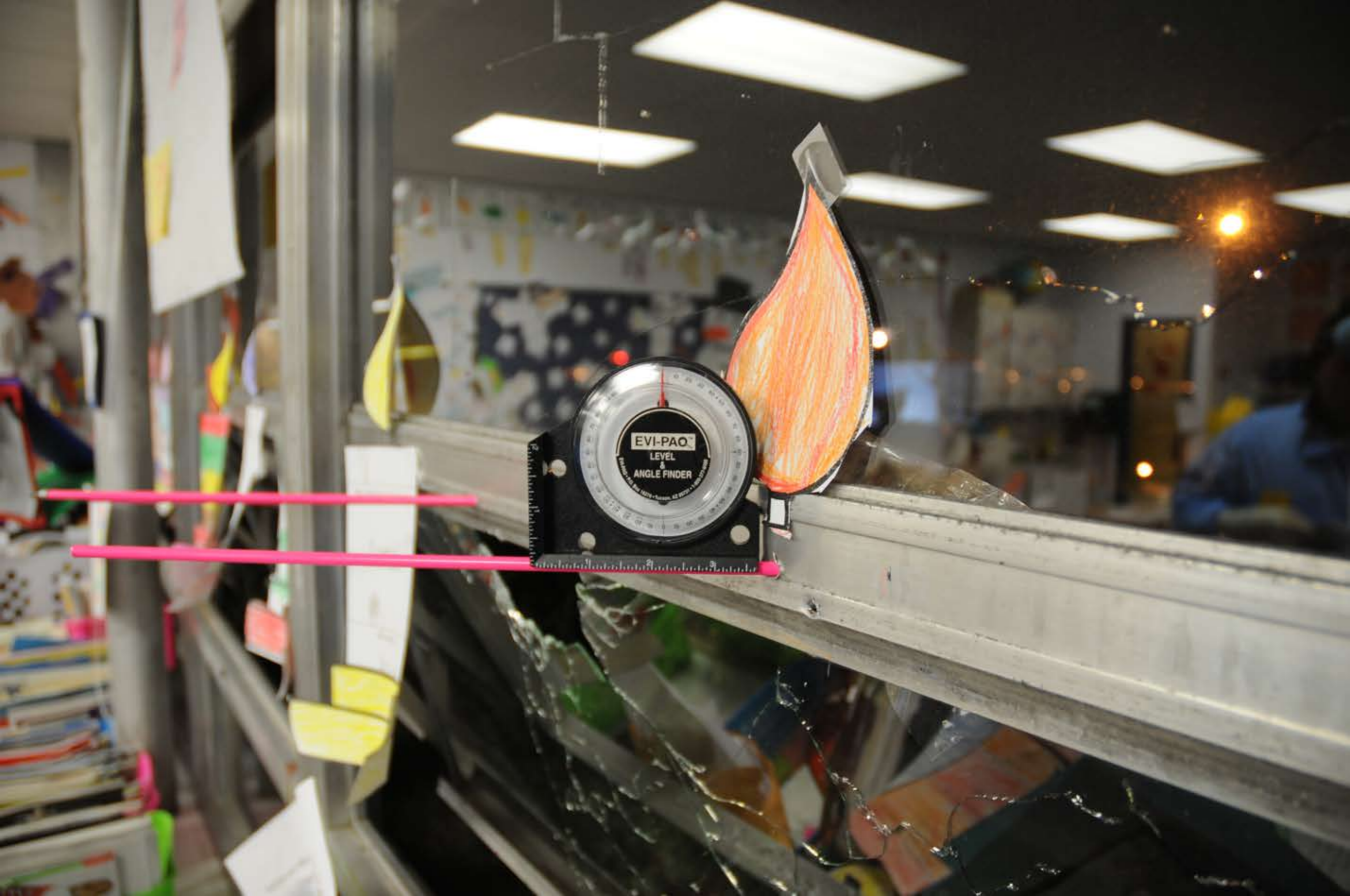


01 02 03 12

01 02 03 12

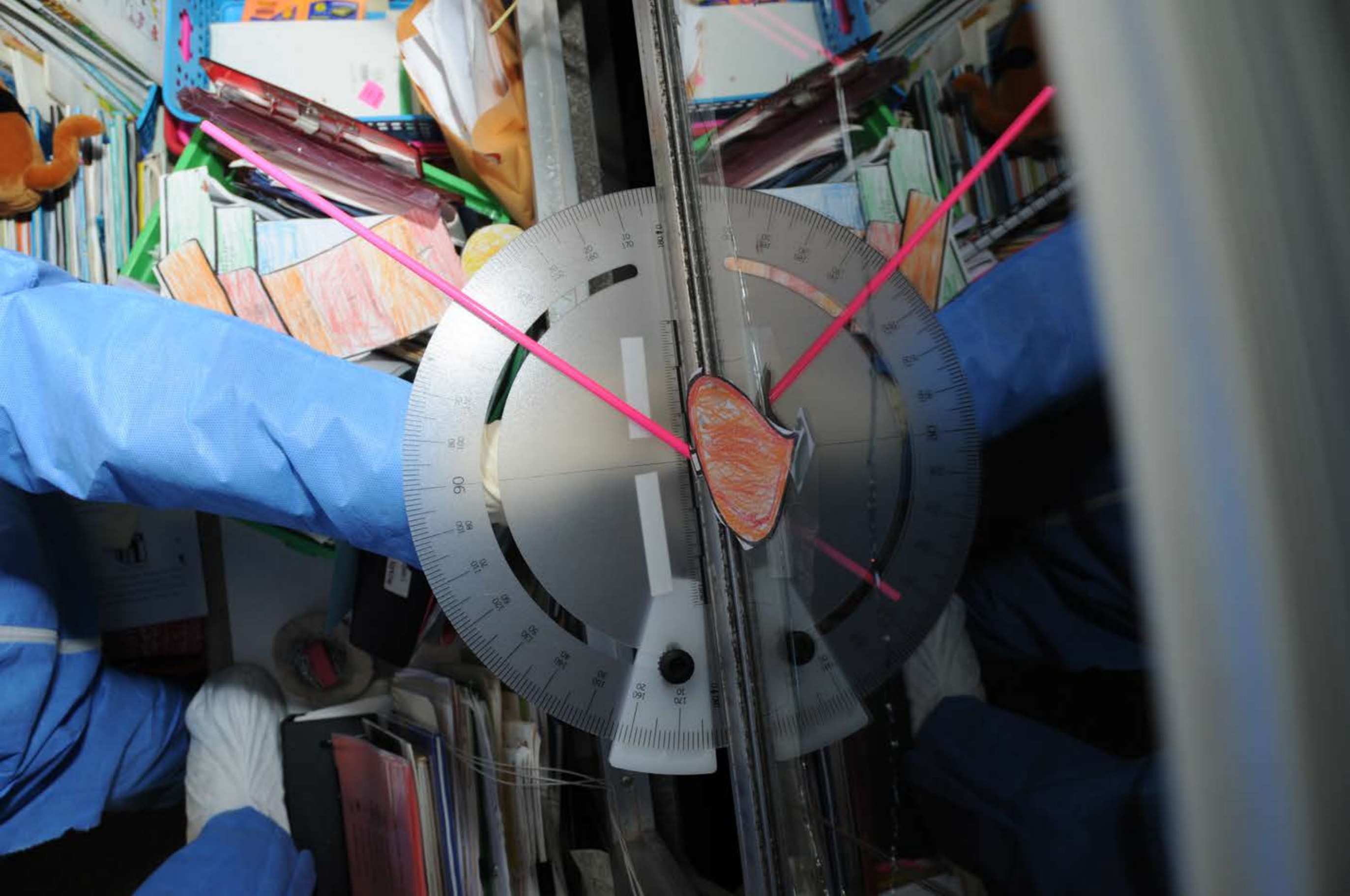
01 02 03 12

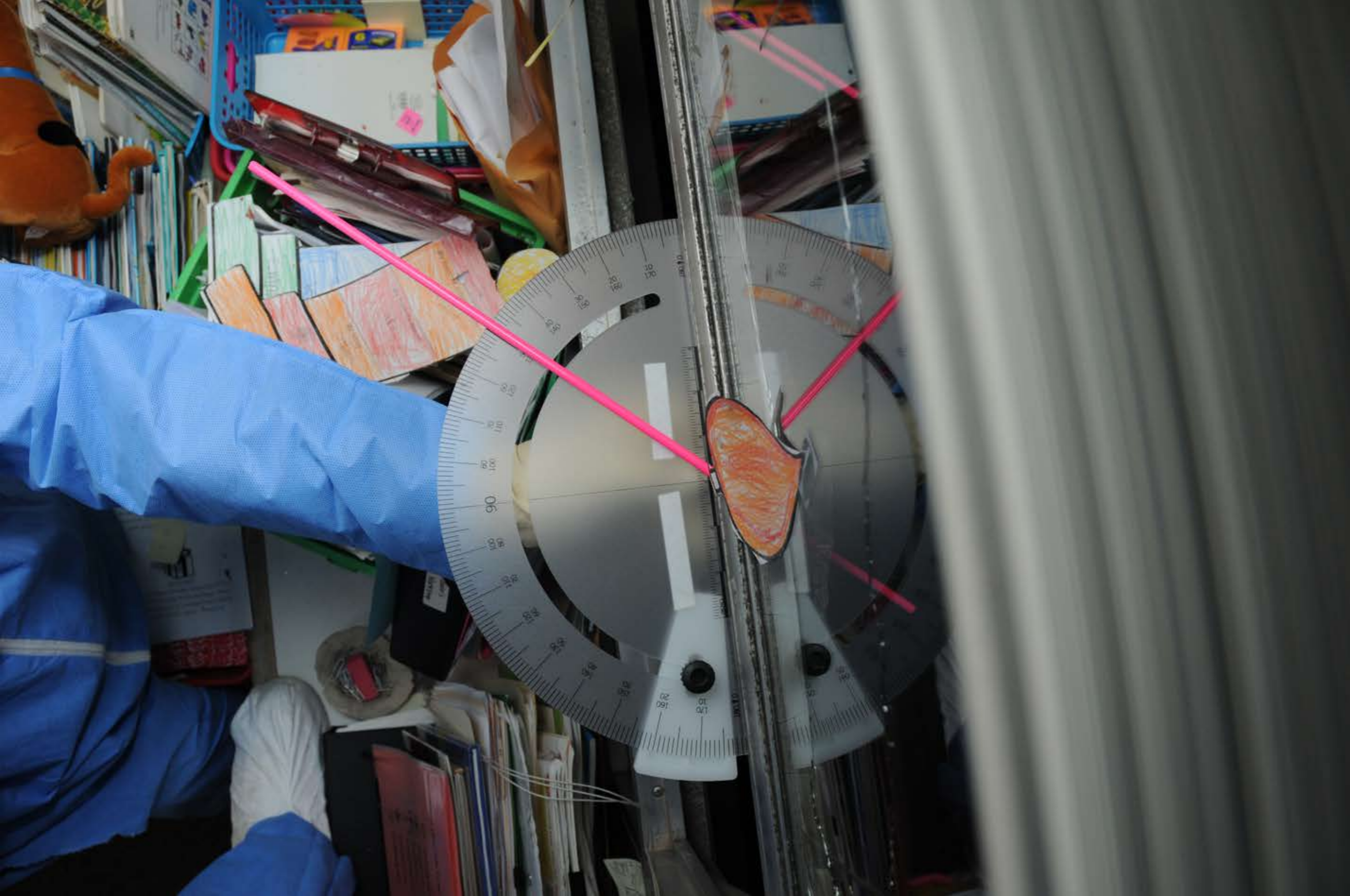




01 02 03 12

01 02 03 12

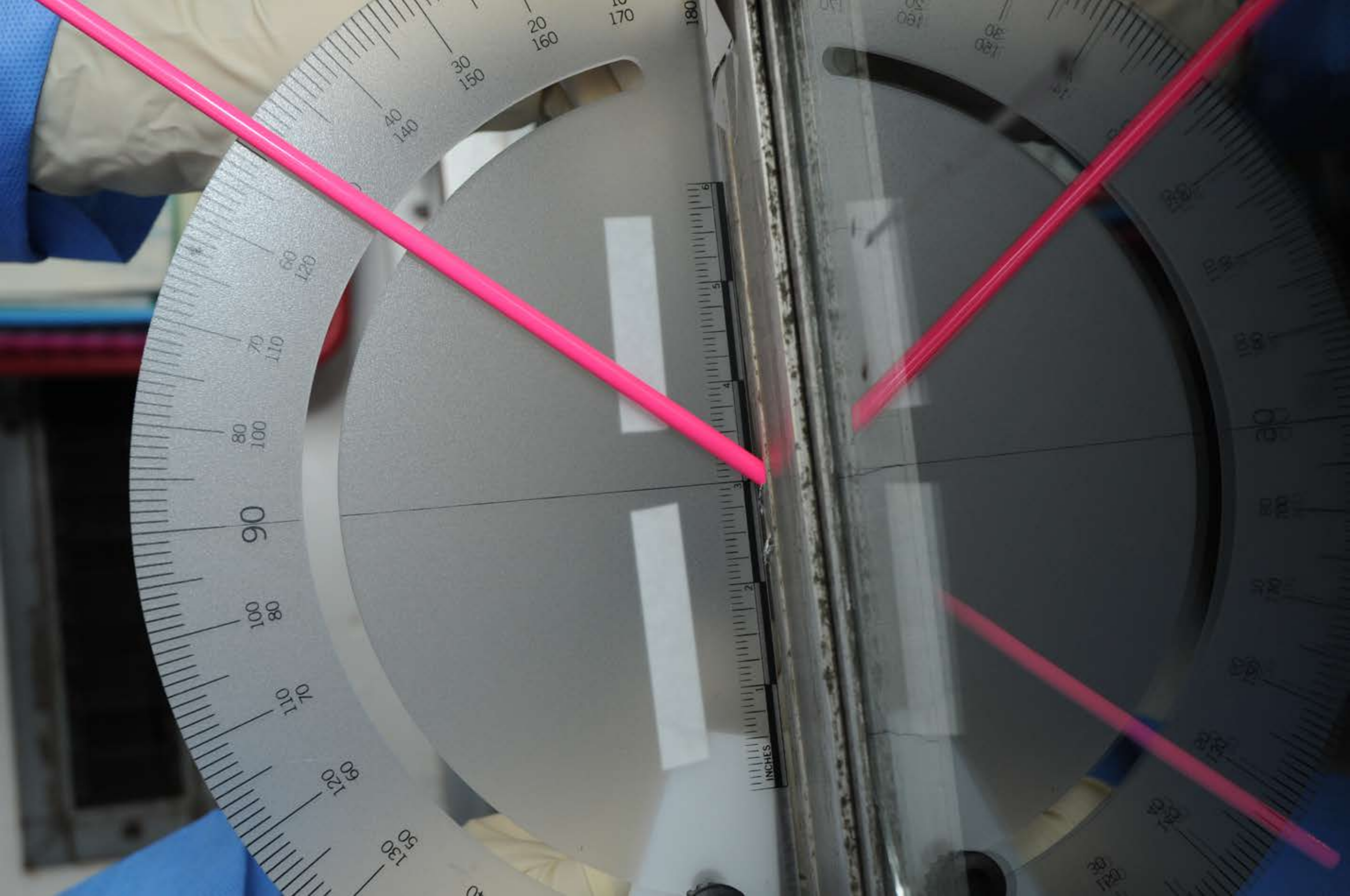




01 02 03 12

01 02 03 12

01 02 03 12



03 06 12

03 06 12

03 06 12

03 06 12

03 06 12

03 06 12

03 06 12

03 06 12

01 02 03 06 12

01 02 03 06 12

01 02 03 06 12



10

★ Welcome! ★



01 02 03 06 12

01 02 03 06 12

01 02 03 06 12

01 02 03 06 12

01 02 03 06 12

01 02 03 06 12

01 02 03 06 12

01 02 03 06 12

01 02 03 06 12

01 02 03 06 12

01 02 03 06 12

01 02 03 06 12

01 02 03 06 12

01 02 03 06 12

01 02 03 06 12





Handwriting tips for young kids

1. Look at the paper
2. Hold the paper
3. Talk
4. Check and correct

How to hold a pencil

Handwriting tips for young kids

How to hold a pencil

Handwriting tips for young kids

Handwriting tips for young kids

Handwriting tips for young kids

Handwriting tips for young kids

Handwriting tips for young kids

Editing
- add a period
- change to a capital
- spelling
- word order needed
Example:
my more Went two the
ma

Handwriting tips for young kids

Handwriting tips for young kids



01 02 03 06 12

01 02 03 06 12

01 02 03 06 12

01 02 03 06 12

01 02 03 06 12

01 02 03 06 12

01 02 03 06 12

01 02 03 12

01 02 03 06 12

01 02 03 12

01 02 03 12

01 02 03 06 12

03 06 12

01 02 03 06 12

01 02 03 06 12

01 02 03 06 12

01 02 03 06 12

01 02 03 06 12

03 06 12

01 02 03 06 12

01 02 03 06 12

03 06 12

01 02 03 06 12

01 02 03 06 12

01 02 03 06 12

03 06 12

01 02 03 06 12

01 02 03 06 12

03 06 12

01 02 03 06 12

01 02 03 06 12

01 02 03 06 12

01 02 03 06 12

01 02 03 06 12

10



01 02 03 06 12

03 06 12

01 02 03 06 12

01 02 03 06 12

01 02 03 06 12

01 02 03 06 12

01 02 03 06 12

01 02 03 06 12

01 02 03 12

01 02 03 12

01 02 03 06 12

01 02 03 06 12

01 02 03 06 12

01 02 03 06 12

03 06 12

01 02 03 06 12

01 02 03 06 12

01 02 03 06 12

01 02 03 06 12

01 02 03 06 12

01 02 03 06 12

01 02 03 06 12

01 02 03 06 12

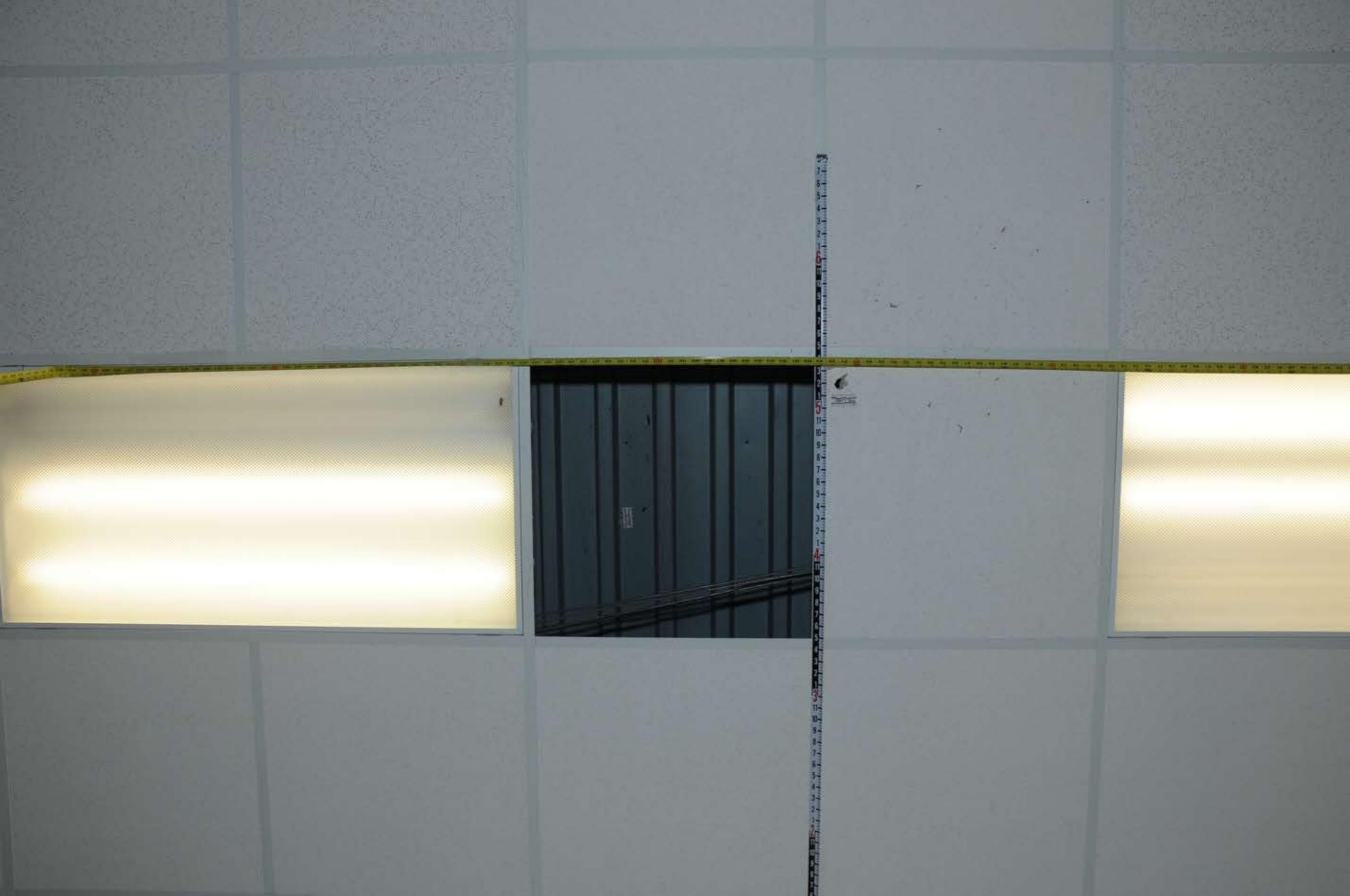
01 02 03 12

SPH 1 210

01 02 03 06 12

01 02 03 12





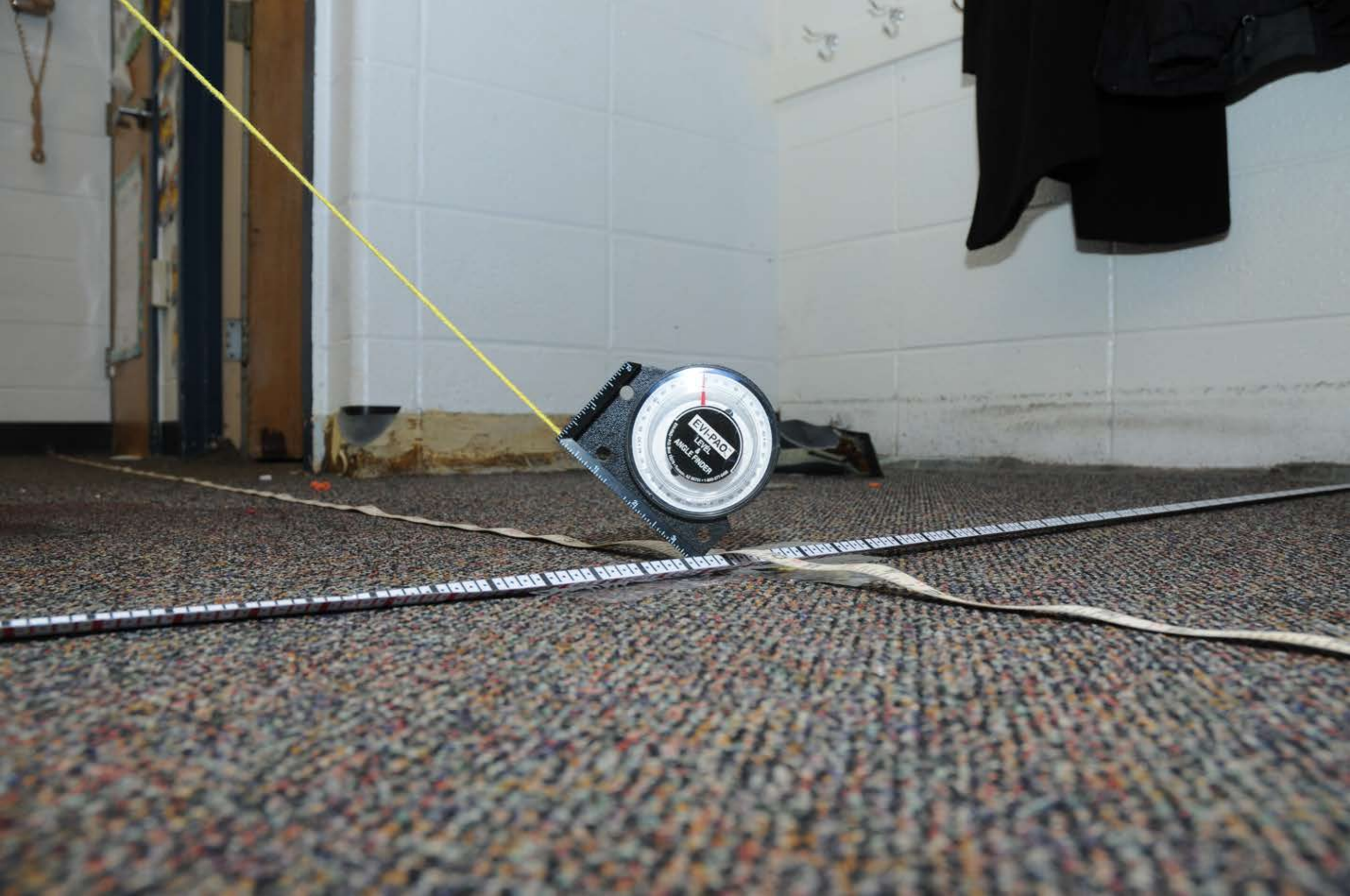
STAIN 1

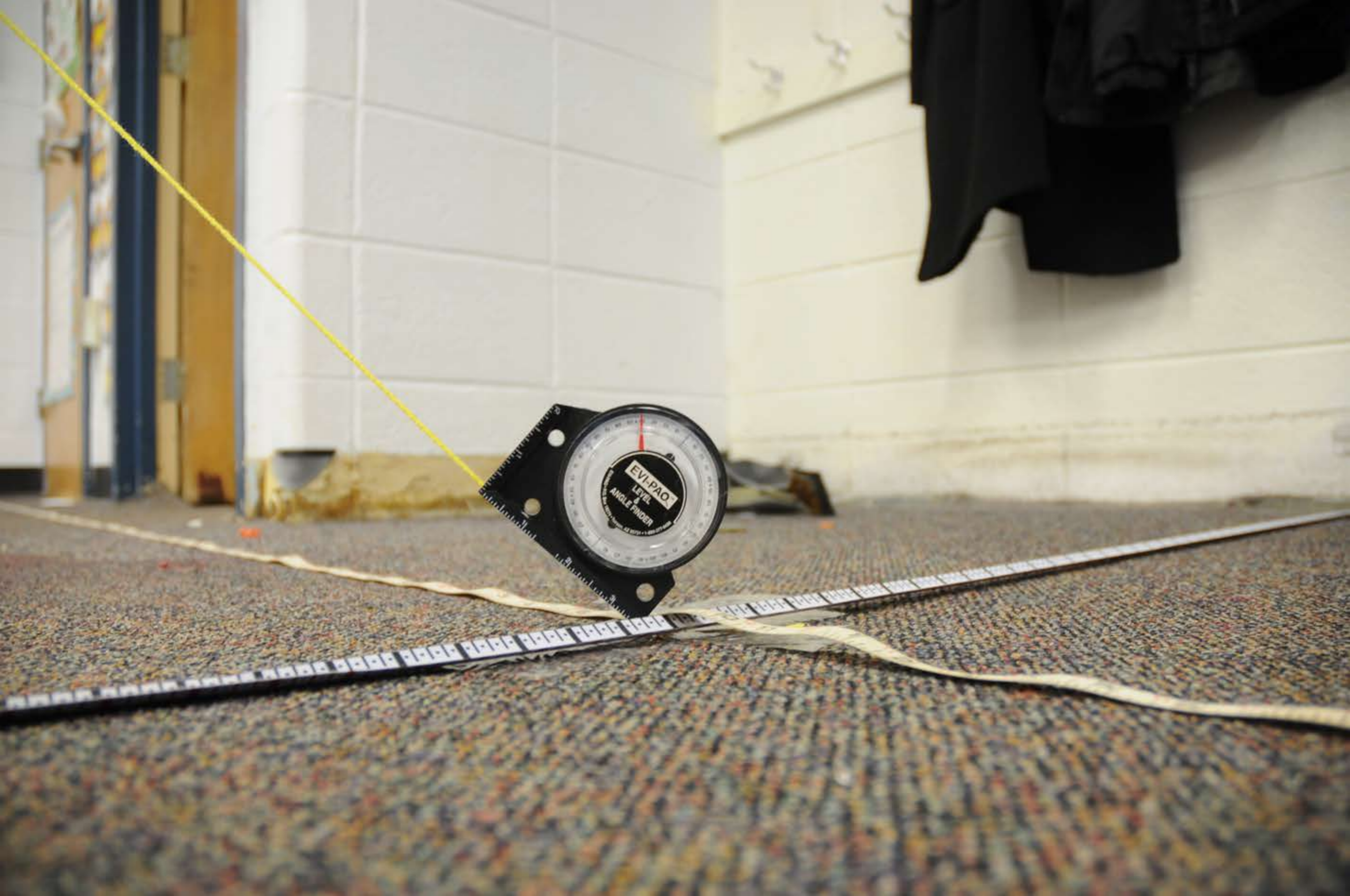
01 02 03 06 12

01 02 03 06 12

01 02 03 06 12

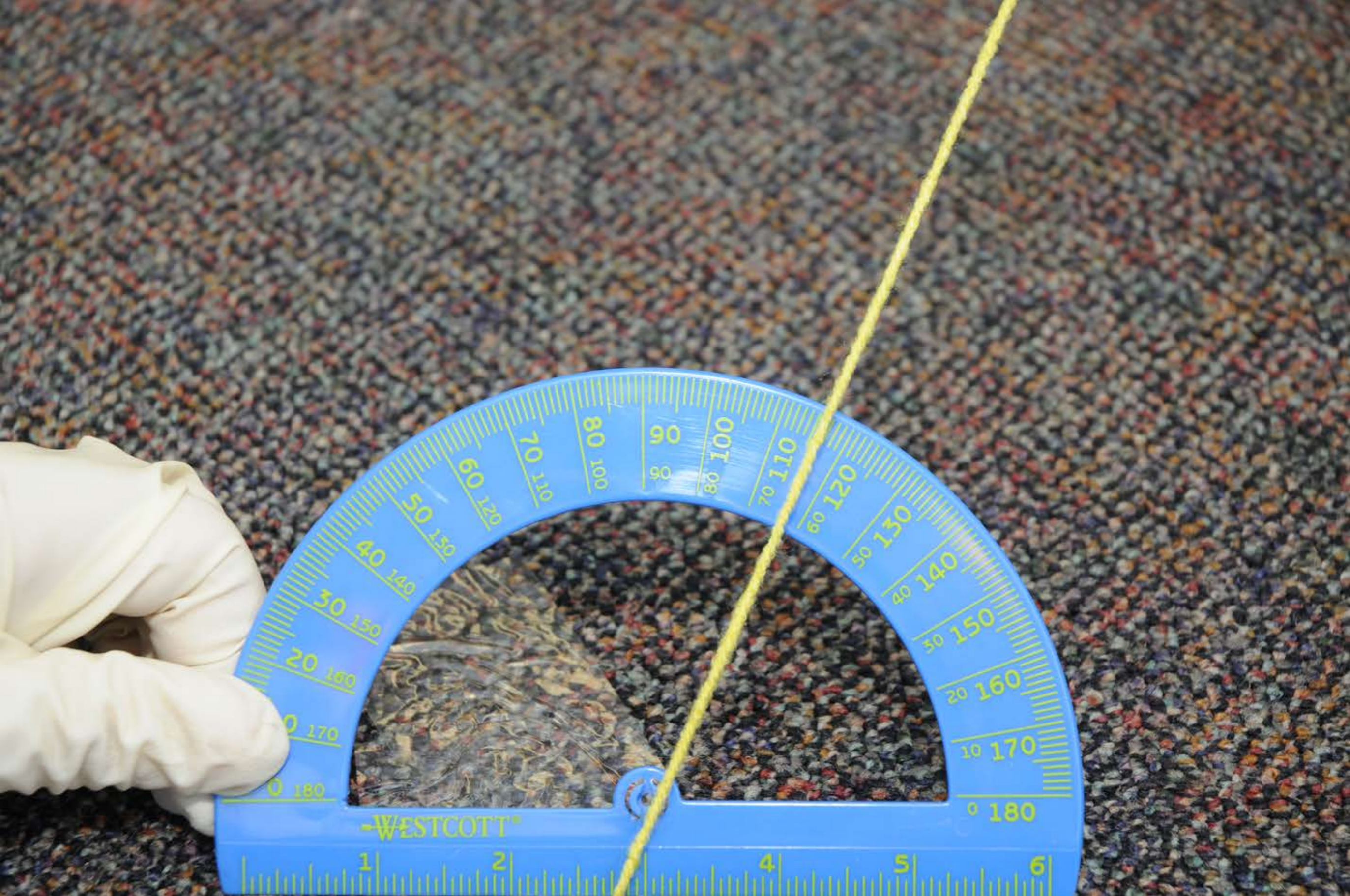
01 02 03 12





01 02 03 12

01 02 03 06 12



WESTCOTT®

1 2 4 5 6

01 02 03 06 12

03 06 12

03 06 12

01 02 03 12

01 02 03 12

01 02 03 12

01 02 03 12



NEWTOWA PUBLIC SCHOOLS SCHOOL CALENDAR

AUGUST	SEPTEMBER	OCTOBER	NOVEMBER	DECEMBER
1 2 3 4 5 6 7 8 9 10 11 12 13 14 15 16 17 18 19 20 21 22 23 24 25 26 27 28 29 30 31	1 2 3 4 5 6 7 8 9 10 11 12 13 14 15 16 17 18 19 20 21 22 23 24 25 26 27 28 29 30 31	1 2 3 4 5 6 7 8 9 10 11 12 13 14 15 16 17 18 19 20 21 22 23 24 25 26 27 28 29 30 31	1 2 3 4 5 6 7 8 9 10 11 12 13 14 15 16 17 18 19 20 21 22 23 24 25 26 27 28 29 30 31	1 2 3 4 5 6 7 8 9 10 11 12 13 14 15 16 17 18 19 20 21 22 23 24 25 26 27 28 29 30 31

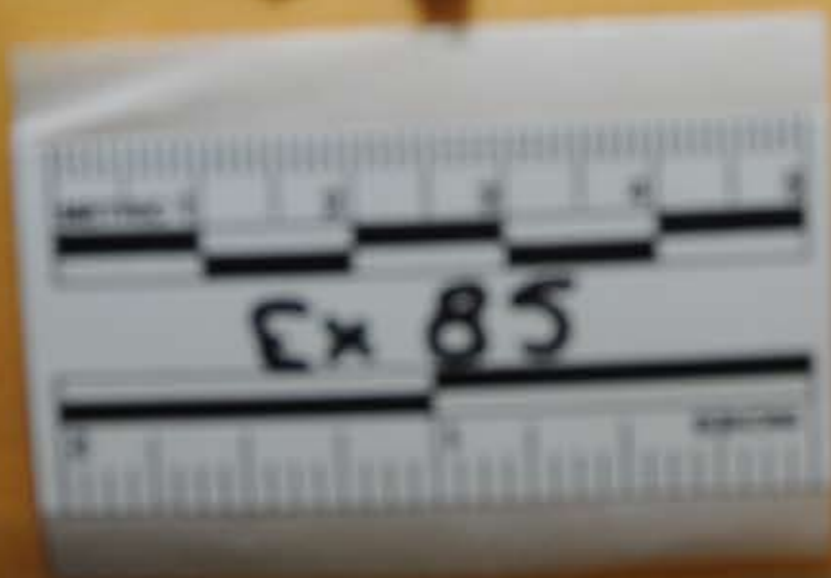
SEPTEMBER 15 (15)
15-16-17-18-19-20-21-22-23-24-25-26-27-28-29-30-31

OCTOBER 1 (1)
1-2-3-4-5-6-7-8-9-10-11-12-13-14-15-16-17-18-19-20-21-22-23-24-25-26-27-28-29-30-31

NOVEMBER 1 (1)
1-2-3-4-5-6-7-8-9-10-11-12-13-14-15-16-17-18-19-20-21-22-23-24-25-26-27-28-29-30

DECEMBER 1 (1)
1-2-3-4-5-6-7-8-9-10-11-12-13-14-15-16-17-18-19-20-21-22-23-24-25-26-27-28-29-30-31





8888
CFS-1
NO. 8
R N
Property
Book No.
From 12
Top



5 4 3 2 1 0
INCHES
5 4 3 2 1 0
METRIC
Ex 85

03 06 12

03 06 12

03 06 12

03 06 12

03 06 12

03 06 12

03 06 12

03 06 12

03 06 12

03 06 12

03 06 12


03 06 12

01 02 03 12


01 02 03 12, 01 02




et




pig




rock



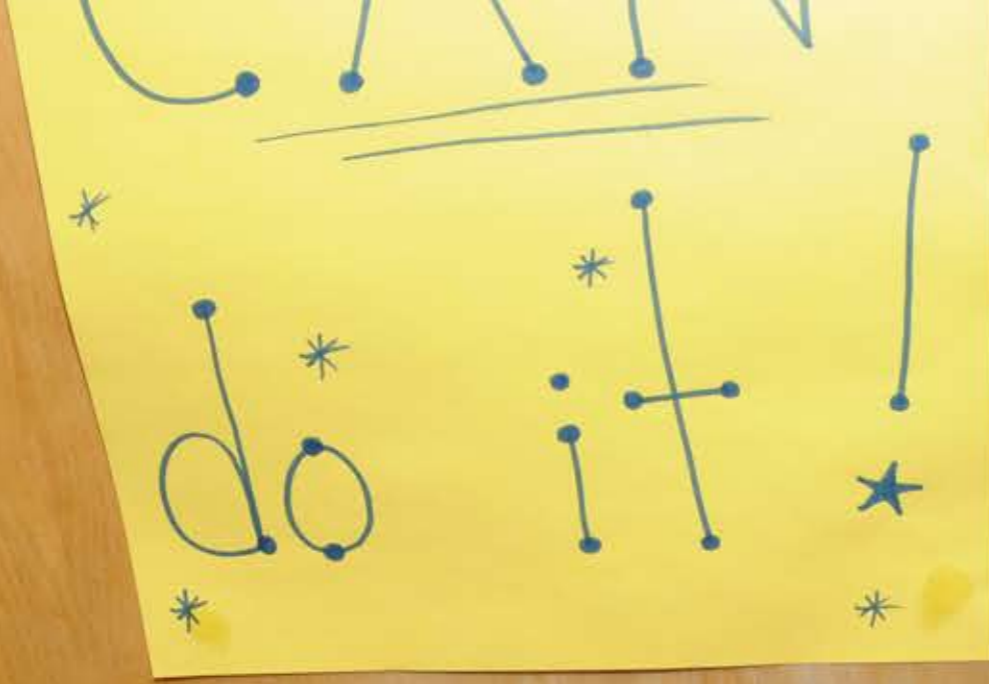
top



bus



rug



I have used punctuation
 I have edited for high-frequency spellings.
 I have re-read my piece.
 I have shared my writing with someone else.

Check Just-Right Books
 Miss's Workshop
 Check Out

Long Vowels

ā	 āpe	 snāke
ē	 ēasel	 zēbra
ī	 īce cream	 kīte
ō	 ōboe	 yō-yō
ū	 ūniform	 tūlip



01 02 03 12

03 06 12

03 06 12

03 06 12

01 02 03 12

01 02 03 06 12

03 06 12

03 06 12

03 06 12

03 06 12

03 06 12

03 06 12

03 06 12

03 06 12

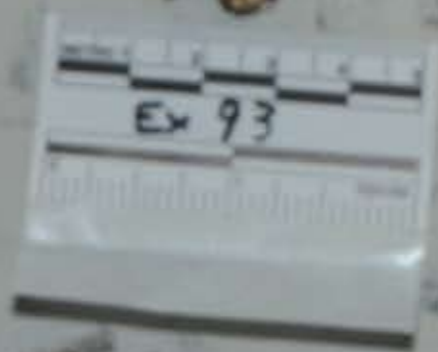
03 06 12

2
PROBE

1C
CUSTODIAL
CLOSET

93





03 06 12

03 06 12

03 06 12

03 06 12

03 06 12

03 06 12

03 06 12

03 06 12

03 06 12

01 02 03 06 12

01 02 03 06 12

01 02 03 06 12

01 02 03 06 12

01 02 03 06 12

01 02 03 06 12

01 02 03 06 12

03 06 12

01 02 03 06 12

01 02 03 06 12

01 02 03 12

01 02 03 12

01 02 03 12

01 02 03 06 12

01 02 03 06 12

01 02 03 12

01 02 03 12

01 02 03 12



OT ENTER

CAUTION DO NOT ENTER

CAUTION DO NOT ENTER

CAUTION DO NOT ENTER

CAUTION DO NOT ENTER

CAUTION DO NOT

CAUTION DO NOT ENTER

CAUTION DO NOT ENTER

CAUTION DO NOT ENTER





BAGS BEARDS
SOCKS & HATS
DEC 3-17

94

94

94



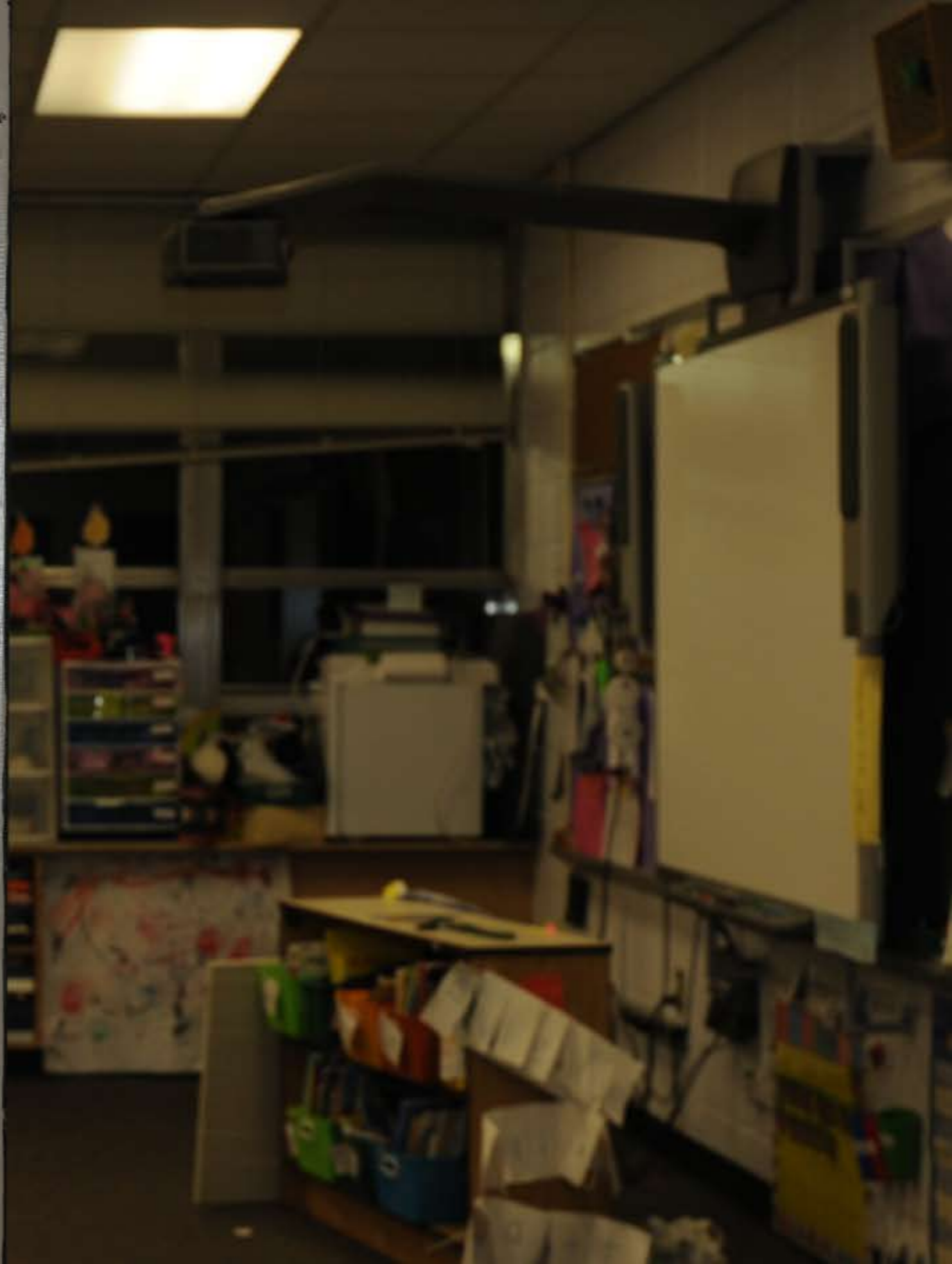
94
94



10

Grade 10

Miss Smith



01 02 03 12





METRIC 1 2 3 4 5
Ex 96
INCHES 1 2

03 06 12

03 06 12

03 06 12

03 06 12

03 06 12

Top A

(Inside)

TOP ↑
(Inside)

01 02

01 02 03 06 12

01 02 03 06 12

01 02 03 06 12

01 02 03 06 12

01 02 03 06 12

01 02 03 06 12

01 02 03 06 12

01 02 03 06 12

01 02 03 06 12

01 02 03 06 12

01 02 03 06 12

01 02 03 06 12

01 02 03 06 12

01 02 03 06 12

01 02 03 06 12

01 02 03 06 12

01 02 03 06 12

01 02 03 06 12

01 02 03 06 12

01 02 03 06 12

01 02 03 06 12

01 02 03 06 12

01 02 03 06 12

01 02 03 06 12

01 02 03 06 12

01 02 03 06 12

01 02 03 06 12

01 02 03 06 12

01 02 03 06 12

01 02

01 02 03 06 12

01 02 03 06 12

01 02 03 06 12

01 02 03 06 12

01 02 03 06 12

01 02 03 06 12

01 02 03 06 12

01 02 03 06 12

01 02 03 06 12

01 02 03 06 12

01 02 03 06 12

01 02 03 06 12

01 02 03 06 12

01 02 03 12

01 02 03 06 12

01 02 03 06 12

01 02 03 06 12

01 02

01 02 03 06 12

01 02 03 06 12

01 02 03 06 12

01 02 03 06 12

01 02 03 06 12

01 02 03 06 12

01 02 03 06 12

01 02 03 06 12

01 02 03 06 12

01 02 03 06 12

01 02 03 06 12

01 02 03 06 12

01 02 03 06 12

01 02 03 06 12

01 02 03 06 12

01 02 03 06 12

01 02 03 06 12

01 02 03 06 12

01 02 03 06 12

01 02 03 06 12

01 02 03 06 12

01 02 03 06 12

01 02 03 06 12

01 02 03 06 12

01 02 03 06 12

01 02 03 06 12

01 02 03 06 12

01 02 03 06 12

01 02 03 06 12

01 02 03 06 12

01 02 03 06 12

01 02 03 06 12

01 02 03 06 12

01 02 03 06 12

01 02 03 06 12

01 02 03 06 12

01 02 03 06 12

01 02 03 06 12

01 02 03 06 12

01 02 03 06 12

01 02 03 06 12

01 02

01 02 03 06 12

01 02 03 06 12

01 02 03 06 12

01 02 03 06 12

01 02 03 06 12

01 02 03 06 12

01 02 03 06 12

01 02 03 06 12

01 02 03 06 12

01 02 03 06 12

01 02 03 06 12

01 02 03 06 12

01 02 03 06 12

01 02 03 06 12

01 02 03 06 12

01 02 03 06 12

01 02 03 06 12

01 02 03 06 12

01 02 03 06 12

01 02 03 06 12

01 02

01 02 03 06 12

01 02 03 06 12

01 02 03 06 12

01 02 03 06 12

01 02 03 06 12

01 02 03 06 12

01 02 03 06 12

01 02 03 06 12

01 02 03 06 12

01 02 03 06 12

01 02 03 06 12

01 02 03 06 12

01 02 03 06 12

01 02 03 06 12

01 02 03 06 12

01 02 03 06 12

Ex 71

ME# 12-17592

03 06 12

03 06 12

03 06 12

03 06 12

03 06 12

03 06 12

03 06 12

03 06 12

03 06 12

03 06 12

03 06 12

03 06 12

03 06 12

03 06 12

03 06 12

03 06 12

03 06 12

03 06 12

03 06 12

03 06 12

03 06 12

03 06 12

03 06 12

03 06 12

03 06 12

03 06 12

03 06 12

03 06 12

03 06 12

03 06 12

03 06 12

03 06 12

01 02

01 02 03 06 12

01 02 03 06 12

01 02 03 06 12

01 02 03 06 12

01 02 03 06 12

01 02 03 06 12

01 02 03 06 12

01 02 03 06 12

01 02 03 06 12

01 02 03 06 12

01 02 03 06 12

01 02 03 06 12

01 02 03 06 12

01 02 03 06 12

01 02 03 06 12

01 02 03 06 12

01 02 03 06 12

01 02 03 06 12

01 02 03 06 12

01 02 03 06 12

01 02 03 06 12

01 02 03 06 12

01 02 03 06 12

01 02 03 06 12

01 02 03 06 12

01 02 03 06 12

01 02 03 06 12

01 02 03 06 12

01 02 03 06 12

01 02 03 06 12

01 02 03 06 12

01 02 03 06 12

01 02 03 06 12

01 02 03 06 12

01 02 03 06 12

01 02 03 06 12

01 02 03 06 12

Ex. 68

ME# 12-17609

03 06 12

03 06 12

03 06 12

03 06 12

03 06 12

03 06 12

03 06 12

03 06 12

03 06 12

03 06 12

03 06 12

03 06 12

03 06 12

03 06 12

03 06 12

03 06 12

03 06 12

03 06 12

03 06 12

03 06 12

03 06 12

03 06 12

03 06 12

03 06 12

03 06 12

03 06 12

03 06 12

03 06 12

03 06 12

03 06 12

03 06 12

03 06 12

03 06 12

03 06 12

03 06 12

03 06 12

03 06 12

03 06 12

01 02

01 02 03 06 12

01 02 03 06 12

01 02 03 06 12

01 02 03 06 12

01 02 03 06 12

01 02 03 06 12

01 02 03 06 12

01 02 03 06 12

01 02 03 06 12

01 02 03 06 12

01 02 03 06 12

01 02 03 12

01 02 03 12

01 02 03 12

01 02 03 12

01 02 03 12

01 02 03 06 12

01 02 03 12

01 02 03 06 12

01 02 03 06 12

01 02 03 06 12

01 02

01 02 03 06 12

01 02 03 06 12

01 02 03 06 12

01 02 03 06 12

01 02 03 06 12

01 02 03 06 12

01 02 03 06 12

01 02 03 06 12

01 02 03 06 12

01 02 03 06 12

01 02 03 06 12

01 02 03 06 12

01 02 03 06 12

01 02 03 06 12

01 02 03 06 12

01 02 03 06 12

01 02 03 06 12

01 02 03 06 12

01 02 03 06 12

Ex 65

ME # 12-17603

03 06 12

03 06 12

03 06 12

03 06 12

03 06 12

03 06 12

03 06 12

03 06 12

03 06 12

03 06 12

03 06 12

03 06 12

03 06 12

03 06 12

03 06 12

03 06 12

03 06 12

03 06 12

03 06 12

03 06 12

03 06 12

03 06 12

03 06 12

03 06 12

03 06 12

03 06 12

03 06 12

03 06 12

03 06 12

03 06 12

01 02

01 02 03 06 12

01 02 03 06 12

01 02 03 06 12

01 02 03 06 12

01 02 03 06 12

01 02 03 06 12

01 02 03 06 12

01 02 03 06 12

01 02 03 06 12

01 02 03 06 12

01 02 03 06 12

01 02 03 06 12

01 02 03 06 12

01 02 03 06 12

01 02 03 06 12

01 02 03 06 12

01 02 03 06 12

01 02 03 06 12

01 02 03 06 12

01 02 03 06 12

01 02 03 06 12

01 02 03 06 12

01 02 03 06 12

01 02 03 06 12

01 02 03 06 12

01 02 03 06 12

01 02 03 06 12

01 02 03 06 12

01 02 03 06 12

01 02 03 06 12

01 02 03 06 12

01 02 03 06 12

01 02 03 06 12

01 02 03 06 12

01 02 03 06 12

01 02 03 06 12

01 02 03 06 12

01 02 03 06 12

01 02 03 06 12

01 02 03 06 12

01 02 03 06 12

01 02 03 06 12

01 02 03 06 12

01 02 03 06 12

01 02 03 06 12

01 02 03 06 12

01 02 03 06 12

01 02 03 06 12

01 02 03 06 12

01 02 03 06 12

01 02 03 06 12

01 02 03 06 12

01 02 03 06 12

01 02 03 06 12

01 02 03 06 12

01 02 03 06 12

01 02 03 06 12

01 02 03 06 12

01 02 03 06 12

01 02 03 06 12

01 02 03 06 12

01 02 03 06 12

01 02 03 06 12

01 02 03 06 12

01 02 03 06 12

01 02 03 06 12

01 02 03 06 12

01 02 03 06 12

01 02 03 06 12

01 02 03 06 12

01 02 03 06 12

01 02 03 06 12

01 02 03 06 12

01 02 03 06 12

01 02 03 06 12

01 02 03 06 12

01 02 03 06 12

01 02 03 06 12

01 02 03 06 12

01 02 03 06 12

01 02 03 06 12

01 02 03 06 12

01 02 03 06 12

01 02 03 06 12

01 02 03 06 12

01 02 03 06 12

01 02 03 06 12

01 02 03 06 12

01 02 03 06 12

01 02 03 06 12

01 02 03 06 12

01 02 03 06 12

01 02 03 06 12

01 02 03 06 12

01 02 03 06 12

01 02 03 06 12

01 02 03 06 12

01 02 03 06 12

01 02 03 06 12

01 02 03 06 12

01 02 03 06 12

01 02 03 06 12

01 02 03 06 12

01 02 03 06 12

01 02 03 06 12

01 02 03 06 12

01 02 03 06 12

01 02 03 06 12

01 02 03 06 12

01 02

01 02 03 06 12

01 02 03 06 12

01 02 03 06 12

01 02 03 06 12

01 02 03 06 12

01 02 03 06 12

01 02 03 06 12

01 02 03 06 12

01 02 03 06 12

01 02 03 06 12

01 02 03 06 12

01 02 03 06 12

01 02 03 06 12

01 02 03 06 12

01 02 03 06 12

01 02 03 06 12

01 02 03 06 12

01 02 03 06 12

01 02 03 06 12

Ex 59

ME# 12-17606

03 06 12

03 06 12

03 06 12

03 06 12

03 06 12

03 06 12

03 06 12

03 06 12

03 06 12

03 06 12

03 06 12

03 06 12

03 06 12

03 06 12

03 06 12

03 06 12

03 06 12

03 06 12

03 06 12

03 06 12

03 06 12

03 06 12

03 06 12

Ex. 58

ME[#] 12-17595

03 06 12

03 06 12

03 06 12

03 06 12

03 06 12

03 06 12

03 06 12

03 06 12

03 06 12

03 06 12

03 06 12

03 06 12

03 06 12

03 06 12

03 06 12

03 06 12

03 06 12

03 06 12

03 06 12

03 06 12

03 06 12

03 06 12

03 06 12

01 02 03 06 12

01 02 03 06 12

01 02 03 06 12

01 02 03 06 12

01 02 03 06 12

01 02 03 06 12

01 02 03 06 12

01 02 03 06 12

01 02

01 02 03 06 12

01 02 03 06 12

01 02 03 06 12

01 02 03 06 12

01 02 03 06 12

01 02 03 06 12

01 02 03 06 12

01 02 03 06 12

01 02 03 06 12

01 02 03 06 12

01 02 03 06 12

01 02 03 06 12

01 02 03 06 12

01 02 03 06 12

01 02 03 06 12

01 02 03 06 12

01 02 03 06 12

01 02 03 06 12

01 02 03 06 12

01 02 03 06 12

01 02 03 06 12

01 02 03 06 12

01 02 03 06 12

01 02 03 06 12

01 02 03 06 12

01 02 03 06 12

01 02

01 02 03 06 12

01 02 03 06 12

01 02 03 06 12

01 02 03 06 12

01 02 03 06 12

01 02 03 06 12

01 02 03 06 12

01 02 03 06 12

01 02 03 06 12

01 02 03 06 12

01 02 03 06 12

01 02 03 06 12

01 02 03 06 12

01 02 03 06 12

01 02 03 06 12

01 02 03 06 12

01 02 03 06 12

01 02 03 06 12

01 02 03 06 12

01 02 03 06 12

Ex 55

ME# 12-17610

03 06 12

03 06 12

03 06 12

03 06 12

03 06 12

03 06 12

03 06 12

03 06 12

03 06 12

03 06 12

03 06 12

03 06 12

03 06 12

03 06 12

03 06 12

03 06 12

03 06 12

03 06 12

03 06 12

03 06 12

03 06 12

03 06 12

03 06 12

03 06 12

03 06 12

03 06 12

03 06 12

03 06 12

03 06 12

03 06 12

03 06 12

03 06 12

03 06 12

03 12

03 06 12

03 06 12

01 02 03 12

01 02 03 12

01 02 03 12

01 02 03 12



01 02, 03

01 02, 03

01 02, 03

01 02, 03

01 02, 03

01 02, 03

01 02, 03

01 02, 03

01 02, 03

01 02, 03

01 02, 03

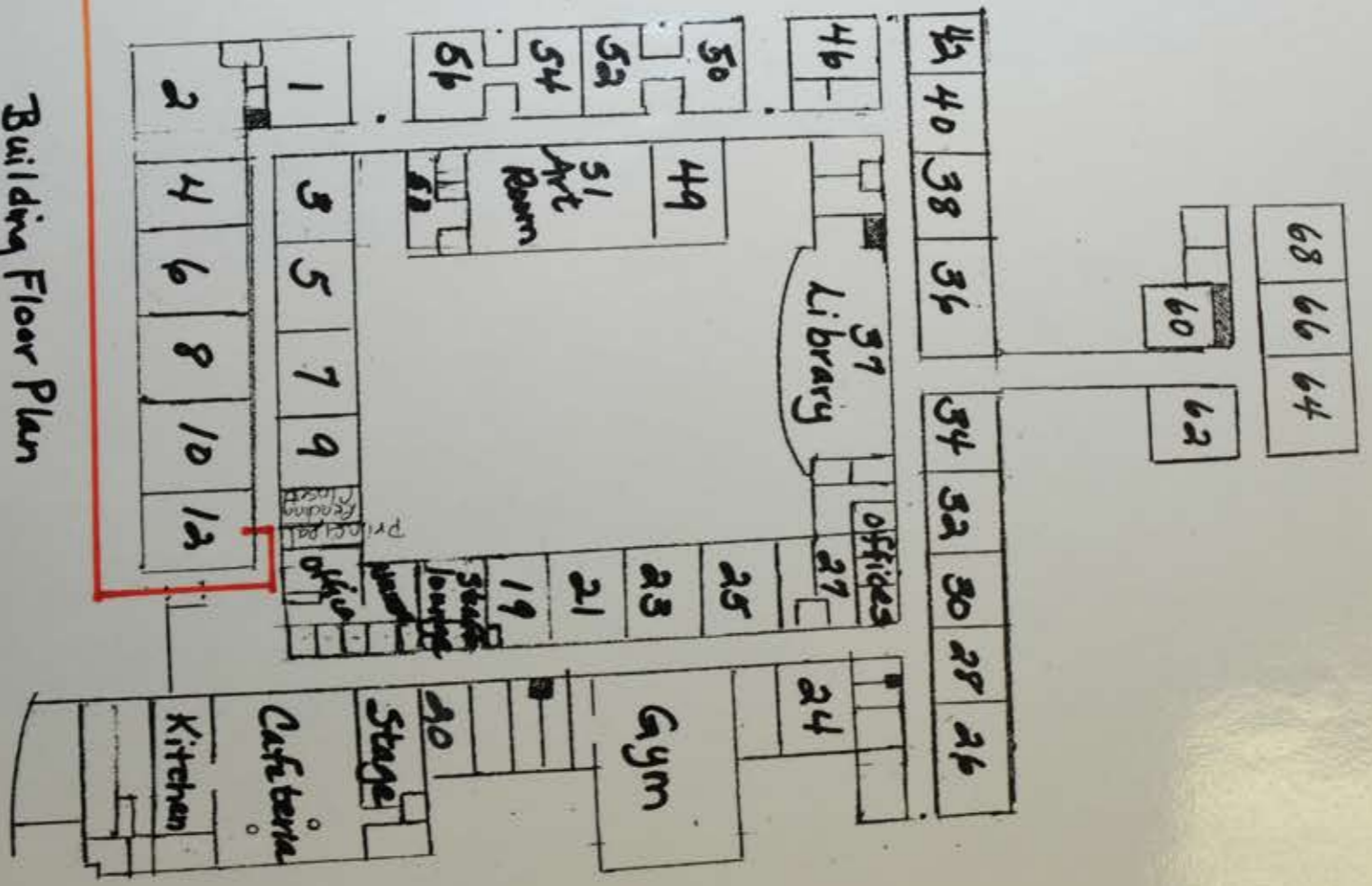
01 02, 03

01 02, 03

01 02, 03

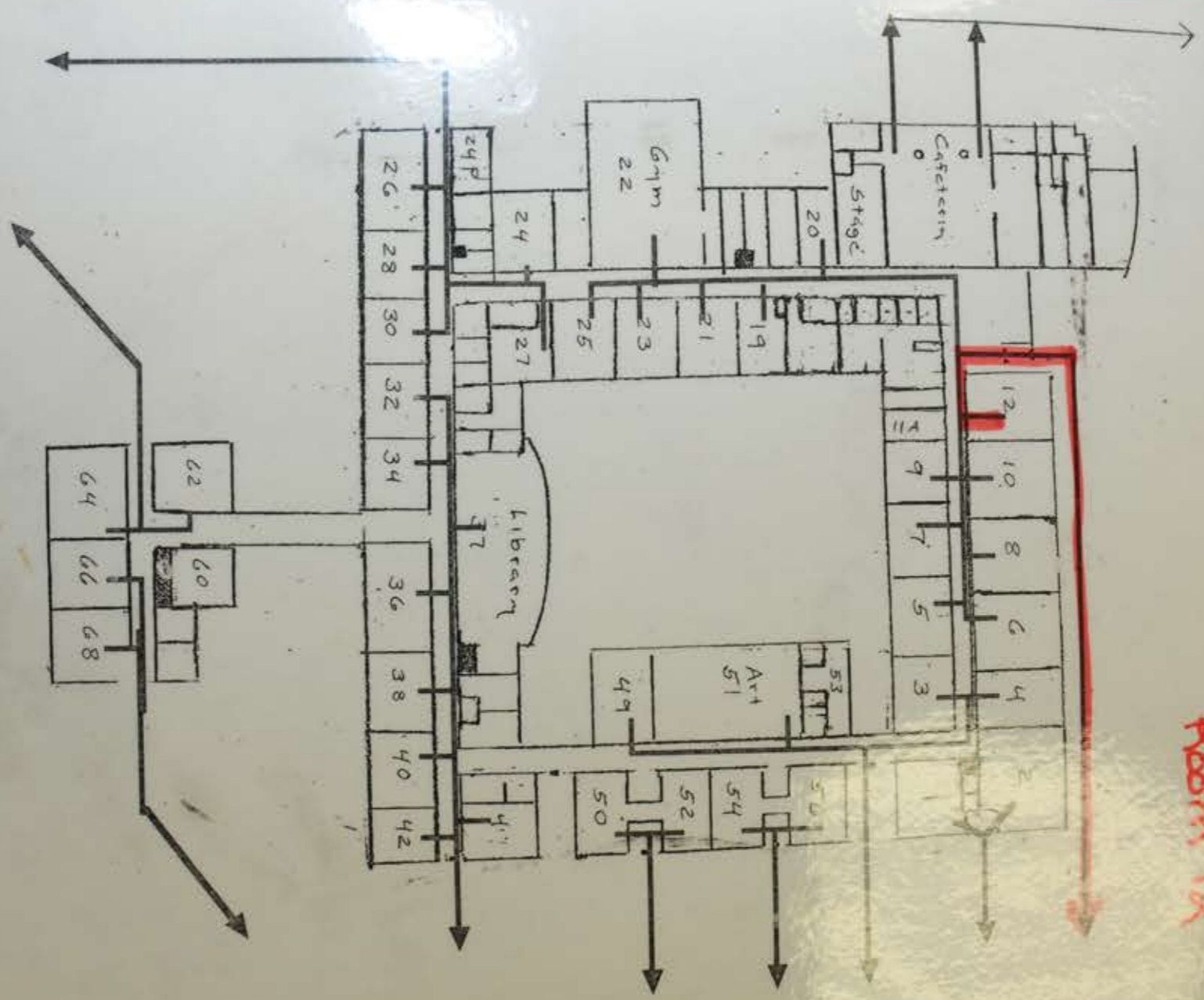
01 02, 03

01 02, 03



Building Floor Plan
2007-2008

Room 12



Room 12



EMERGENCY RESPONSE PLAN

Sandy Hook Elementary School

12 Dickinson Drive

Sandy Hook, CT 06482

Emergency Resource Numbers

Unknown Persons/Intruders / Building Disruptions

Evacuation Sites and Transportation

Weather Related Emergencies

Facility Emergencies

Bomb Threats

Communicable Disease / Suicide Prevention

Issues of Death and Dying / D.N.R. Orders

All Hazards Approach

Media Crisis Communication Plan

10

Miss Soto

¡Bienvenidos!

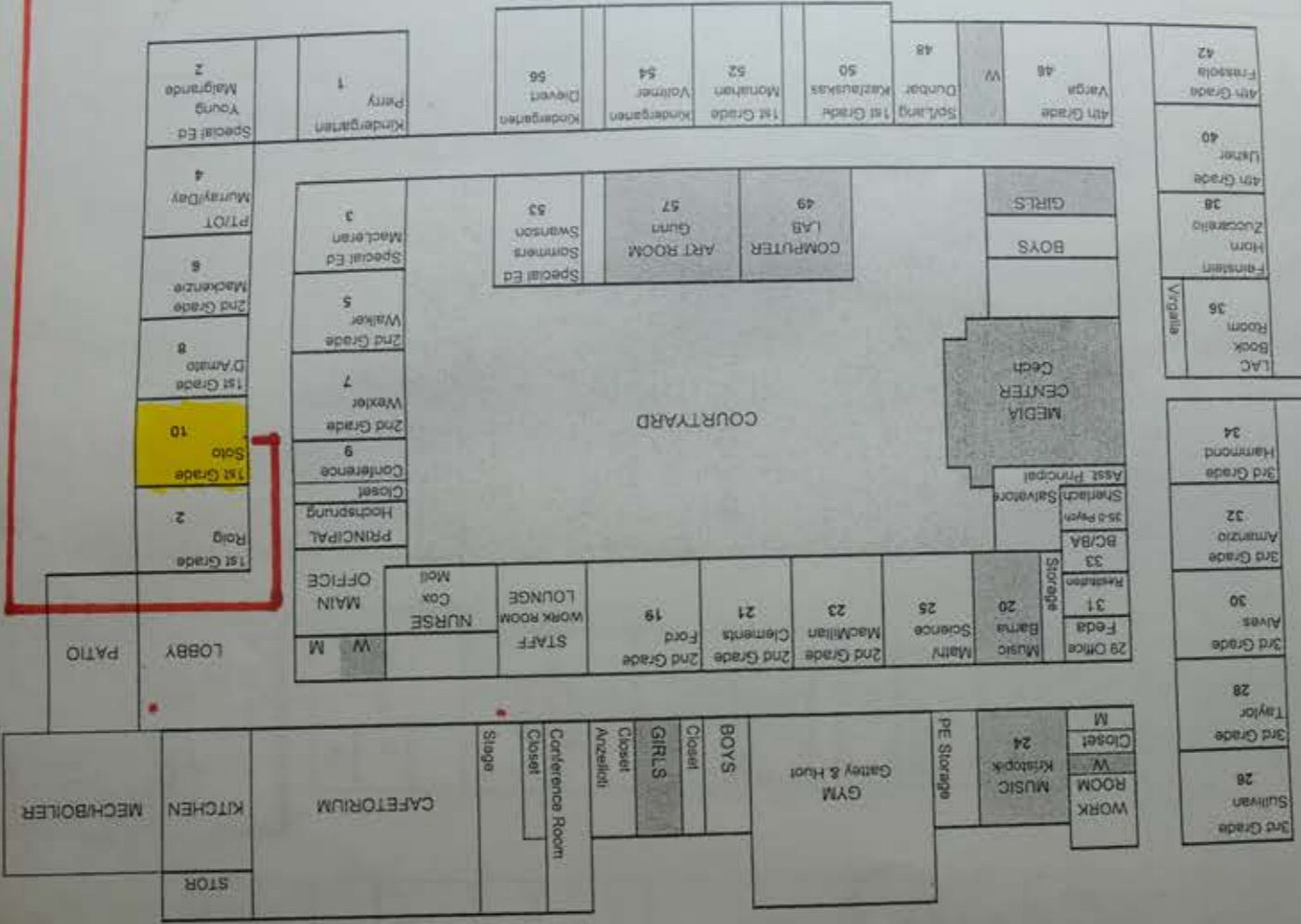


01 02 03 12

01 02 03 12

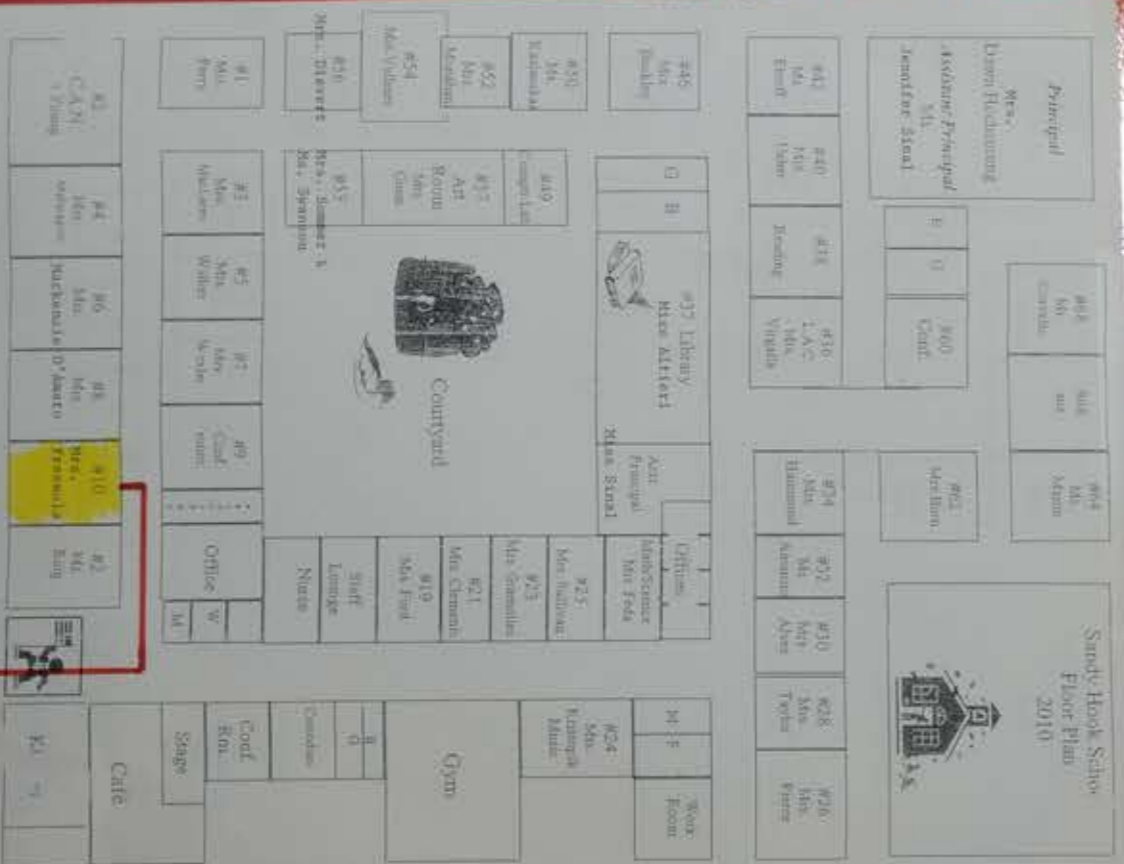
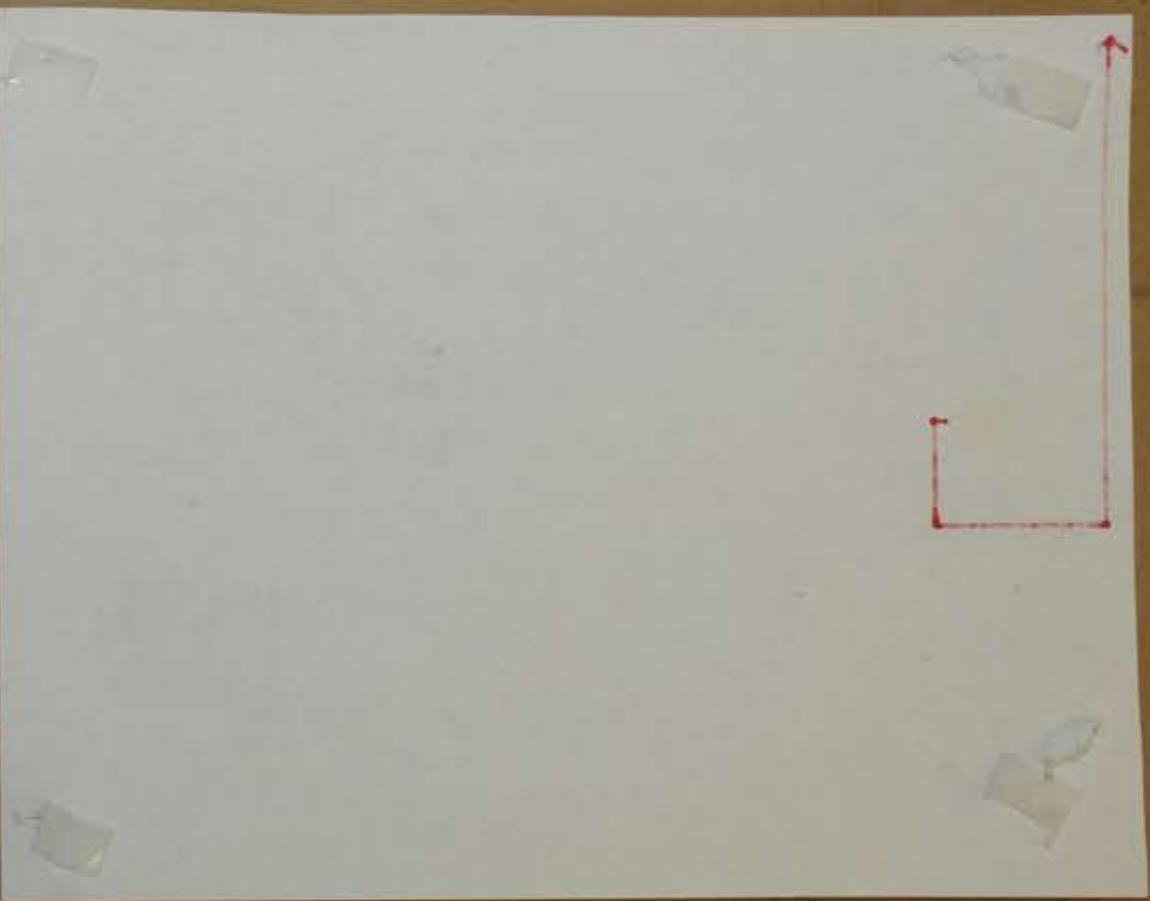
01 02, 03

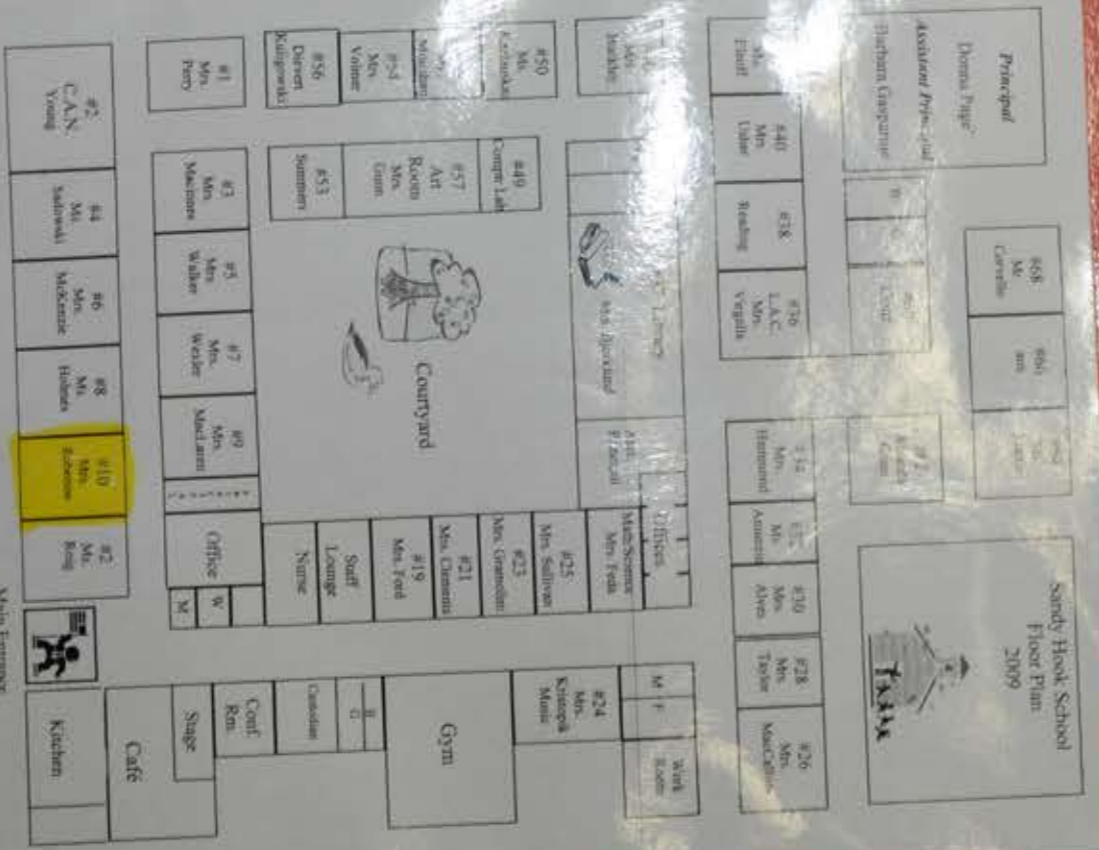




2011-2012
 SANDY HOOK ELEMENTARY
 NO. OF CLASS RM 38
 FACILITY SIZE SQ FT 69,023
 LOT SIZE ACRES 12.13
 NO. OF PARKING 97

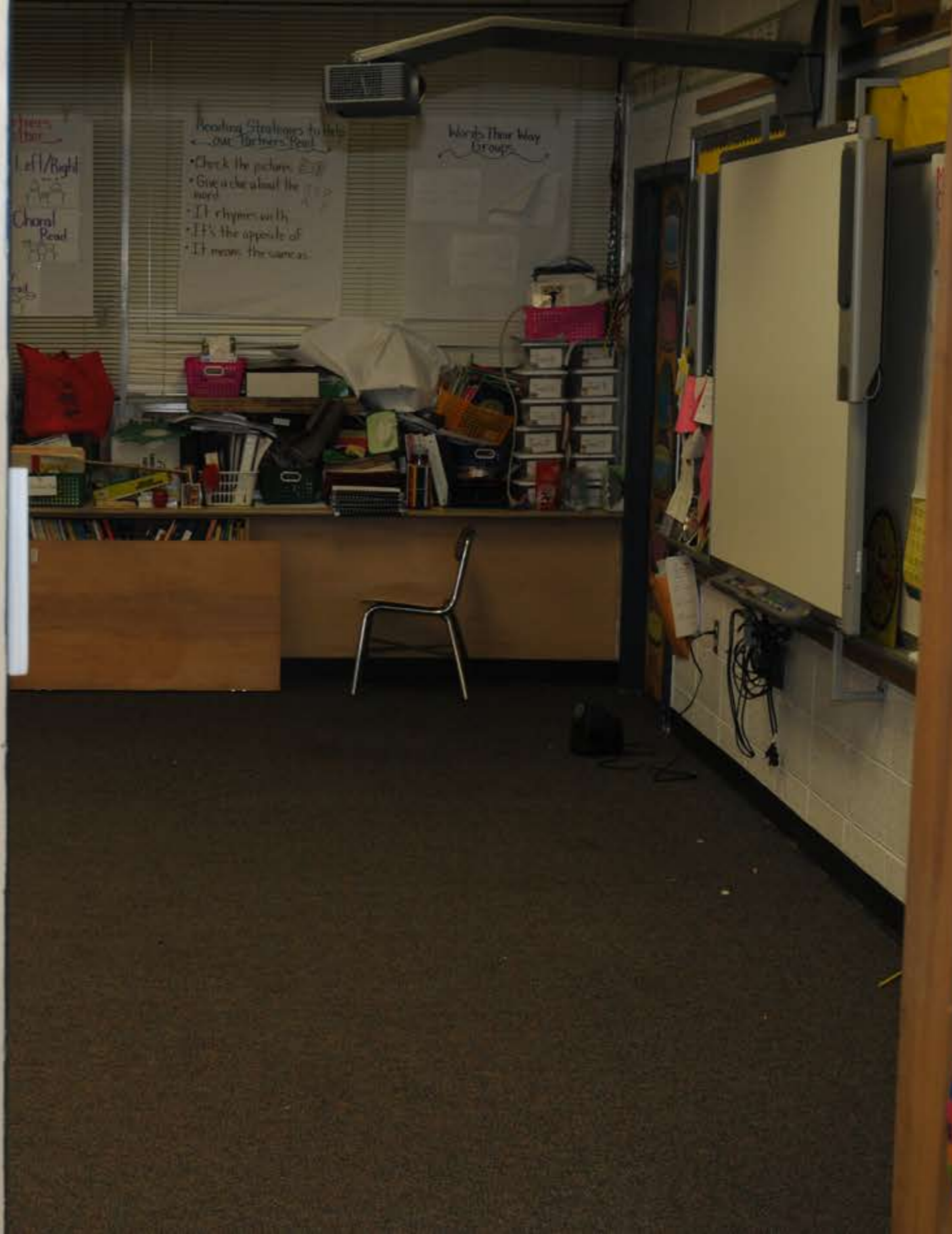






Main Entrance

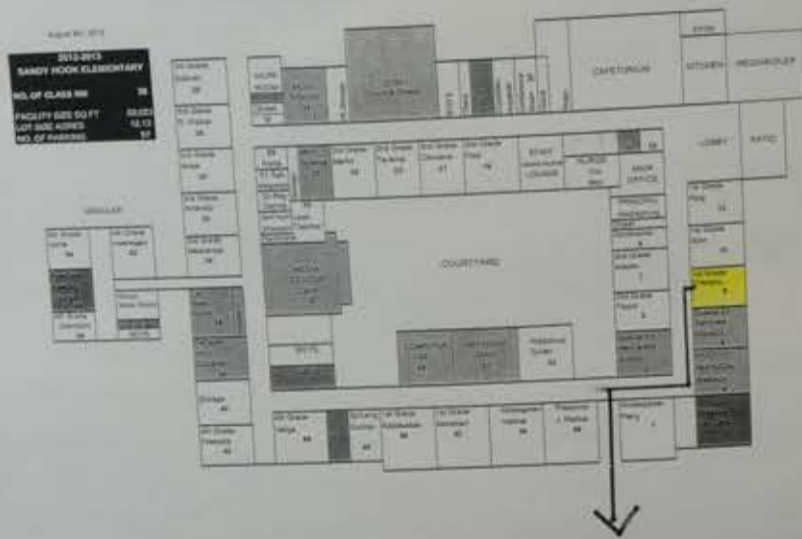




01 02, 03

Fire / Emergency Card

*Bring this pocket with
you in the event of a
drill or emergency.*



Fire /

Emergency
Card

* Bring this pocket with
you in the event of a
drill or emergency. *



Fire /
Emergency
Card

* Bring this pocket with
you in the event of a
drill or emergency. *



01 02, 03

01 02, 03



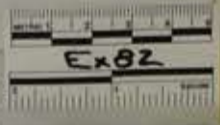
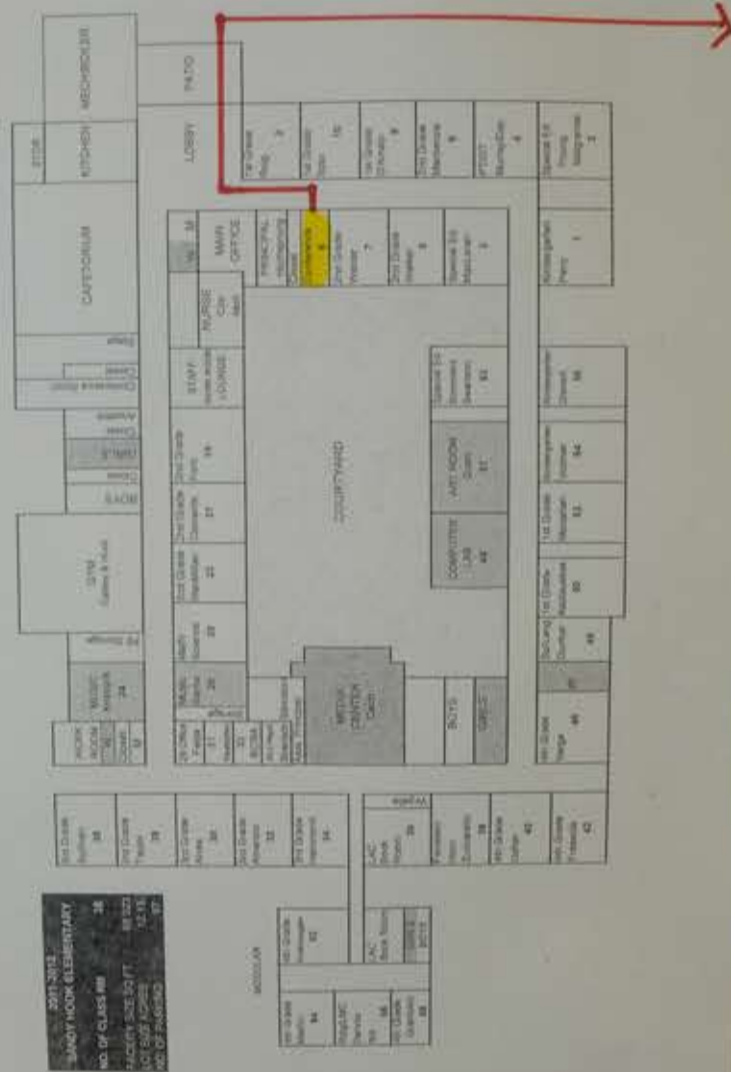
9

Classroom Room 9



9
Custodian Book 9
McGraw-Hill Education







Index
DECEMBER
JANUARY
FEBRUARY
MARCH
APRIL
MAY
JUNE

DSM
Delta Science Modules

Sterilite

ETRE®
entertainment

Ex 128



8

Welcome
1st Grade
Mrs. D'Amato's
Class
Room # 3



W We are glad we're here today.
E Each of us in our own way.
L Loving to learn, play, and share.
O Operating and being fair.
M Obeying rules and getting along.

door



01 02 03 12

10



01 02 03 12



Friday, Dec 14, 2012
Staff: [unclear]
Enter: [unclear]
Chair: [unclear]
Chair: [unclear]
[unclear]
[unclear]



Bags
Bears
Books
Basics

BAGS, BEARS, BOOKS, and BASICS

Play's Up!

Play's Up! on the wall

12

GRADE 1

March into
reading
centers





10



01 02 03 06 12

8

Room 106

Mrs. D'Amato

Welcome
to
1st Grade
Mrs. D'Amato's
Class



W We are glad we're here today.
E Each of us in our own way.
L Loving to learn, play, and share.
C Cooperating and being fair.
O Obeying rules and getting along.
M Making things and singing songs.
E



door



03 06 12

01 02 03 06 12



OLDEN
DAYS
VS
NOW



5

GRADE 2





7
GRADE 2

Different types of...
When do...
When do...



9

California Water

01 02, 03

01 02, 03







11A-5
STORAGE











Winter has high expectations for you!

BAGS BEARS
BOOKS & BASICS
COLLECTION DRIVE FOR OCT
DEC 3-14









MISSION STATEMENT
SUPPORTING EDUCATION

BAGS BEARS
FOODS & BASICS
DEC 3-14



10