

# COVID-19

England 2020 – The Empirical Truth

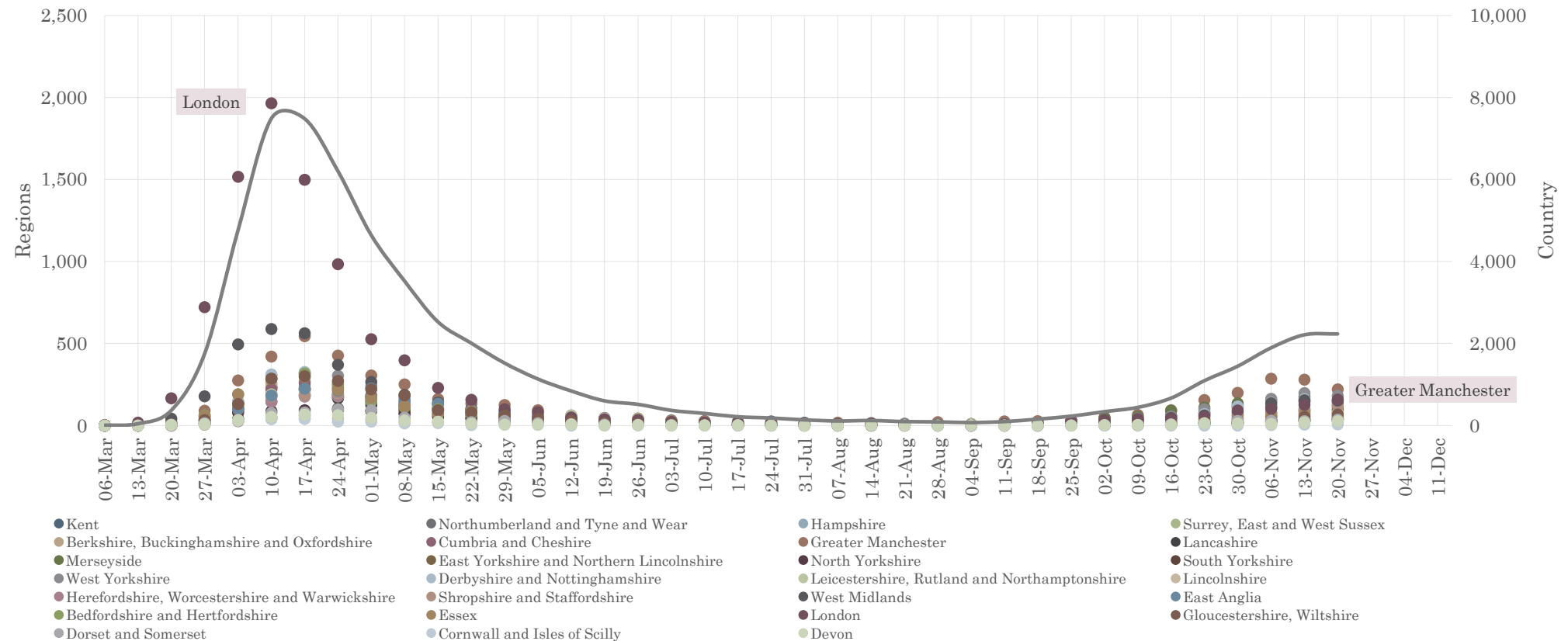
Joel Smalley, MBA, Data Scientist

Marie Oldfield, Chartered Statistician and Scientist (Royal Statistical Society)

The COVID epidemic ended in June. There is no “2nd” COVID wave, just a continuation of the first where community immunity is not quite complete.

England COVID Mentioned on Death Certificate by Date of Occurrence

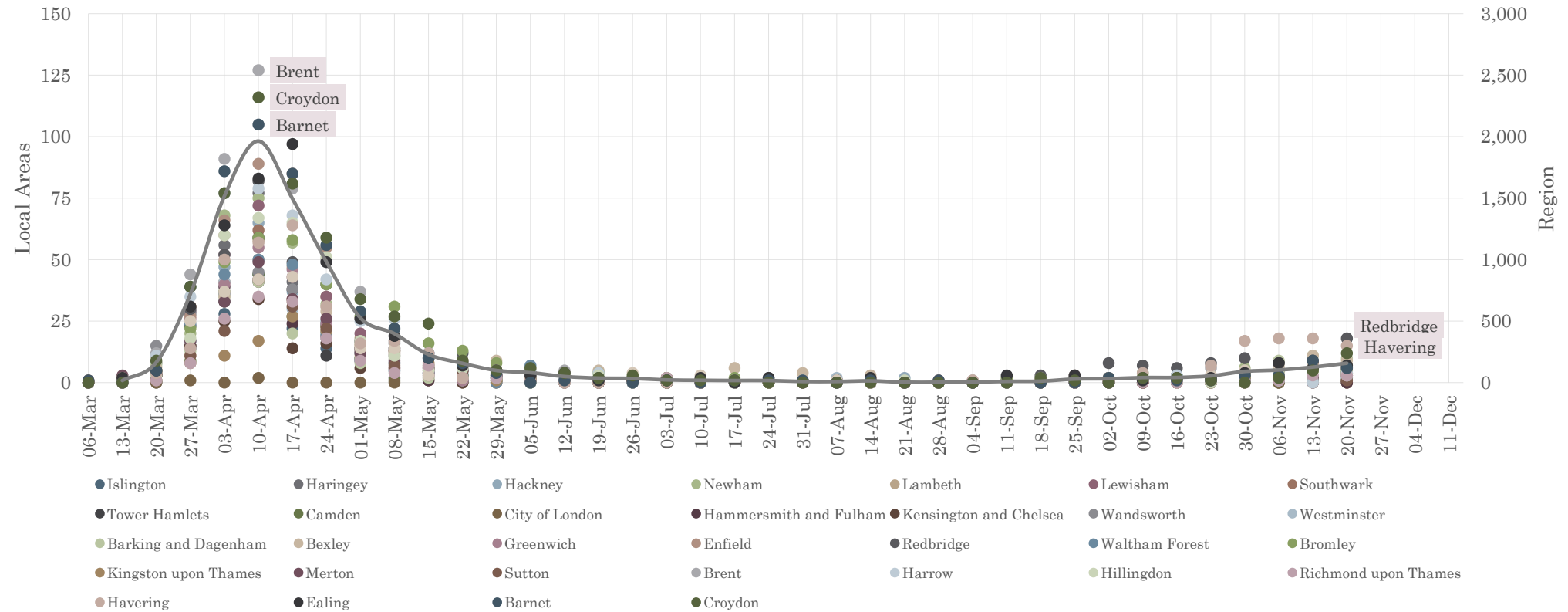
<https://www.ons.gov.uk/peoplepopulationandcommunity/healthandsocialcare/causesofdeath/datasets/deathregistrationsandoccurrencesbylocalauthorityandhealthboard>



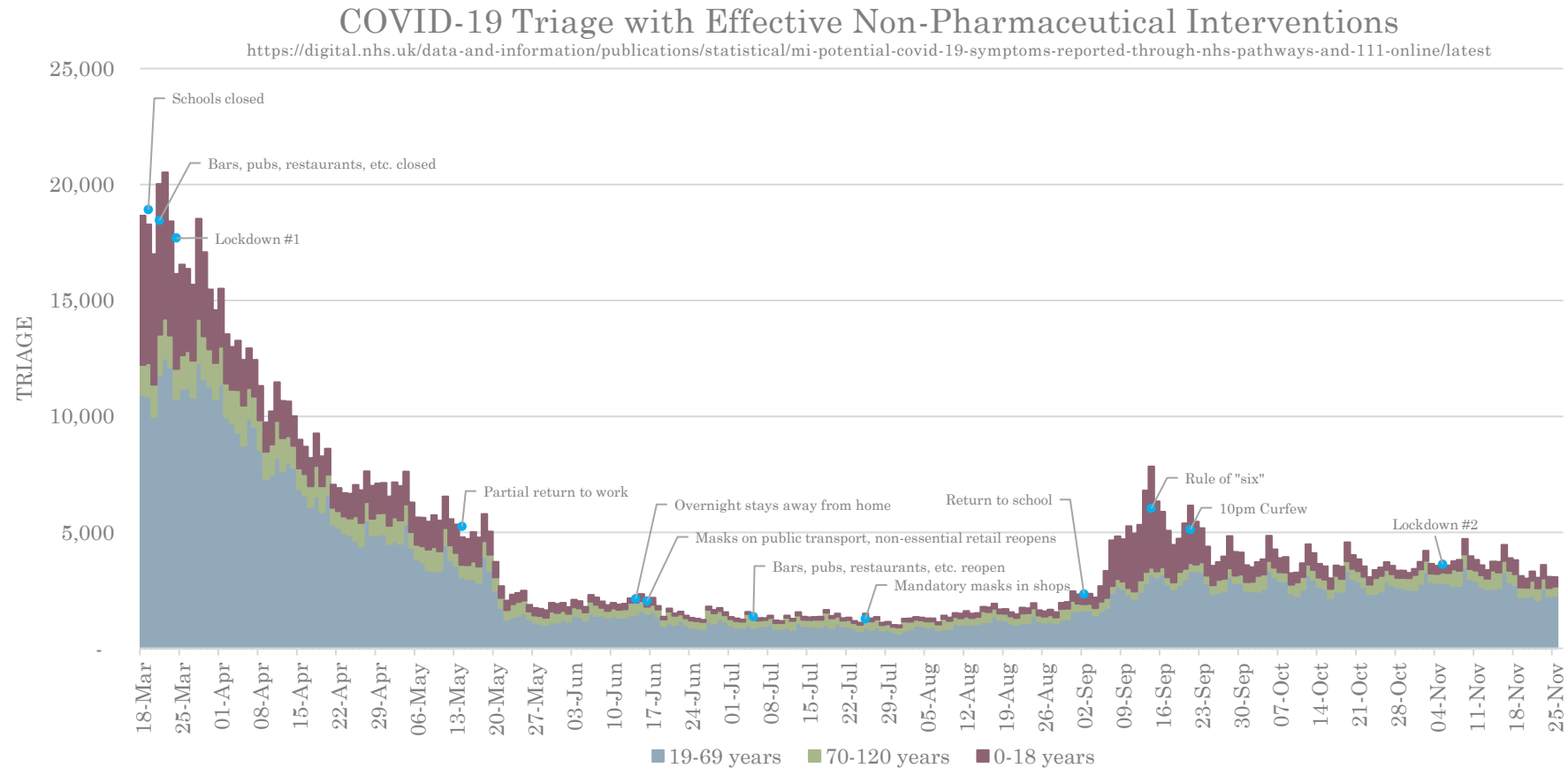
This is true at the local level as well as the regional, strongly suggesting homogeneous behaviour change is not responsible.

### London COVID Mentioned on Death Certificate

<https://www.ons.gov.uk/peoplepopulationandcommunity/healthandsocialcare/causesofdeath/datasets/deathregistrationsandoccurrencesbylocalauthorityandhealthboard>



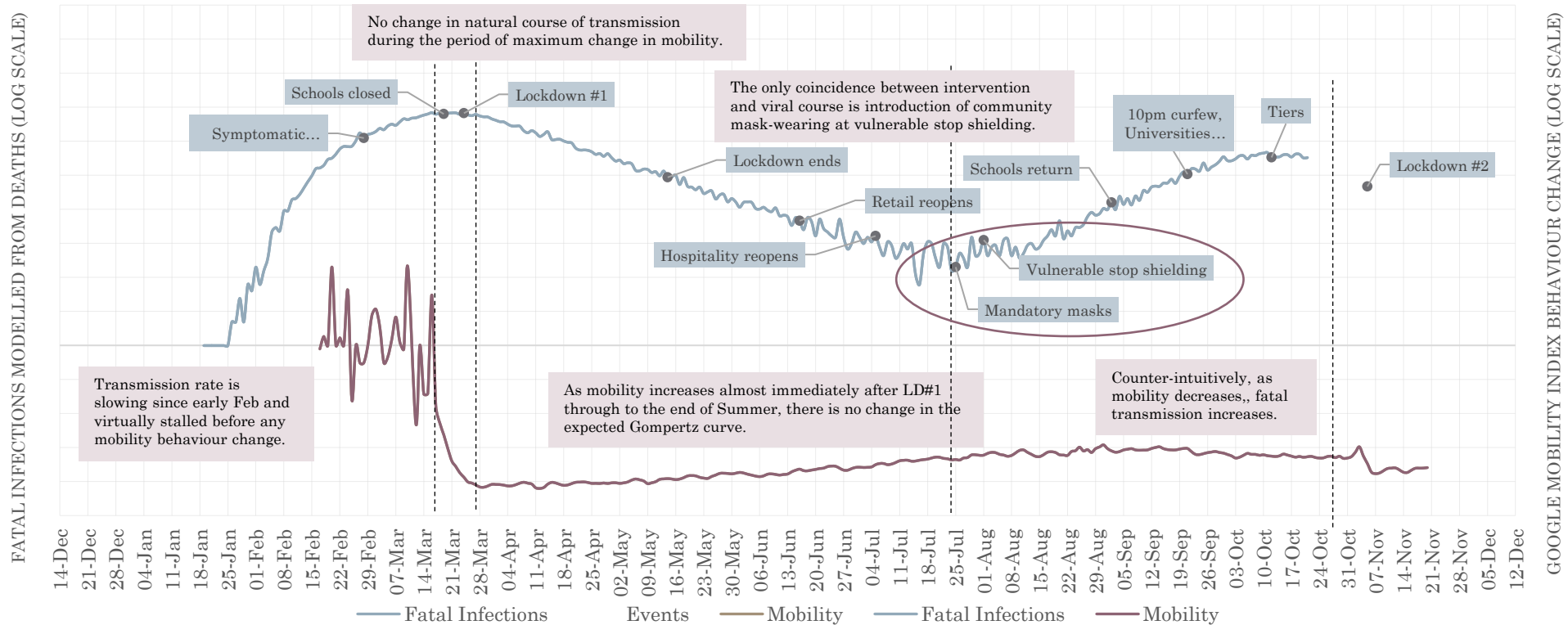
The evidence supporting the impact of interventions should be substantial but it is not at all discernible in reports of COVID-like symptoms to the NHS.



In fact, there is no evidence at all of successful impact of interventions on the key objective of fatal transmission either.

## COVID-19 Infections that Led to Death, England 2020

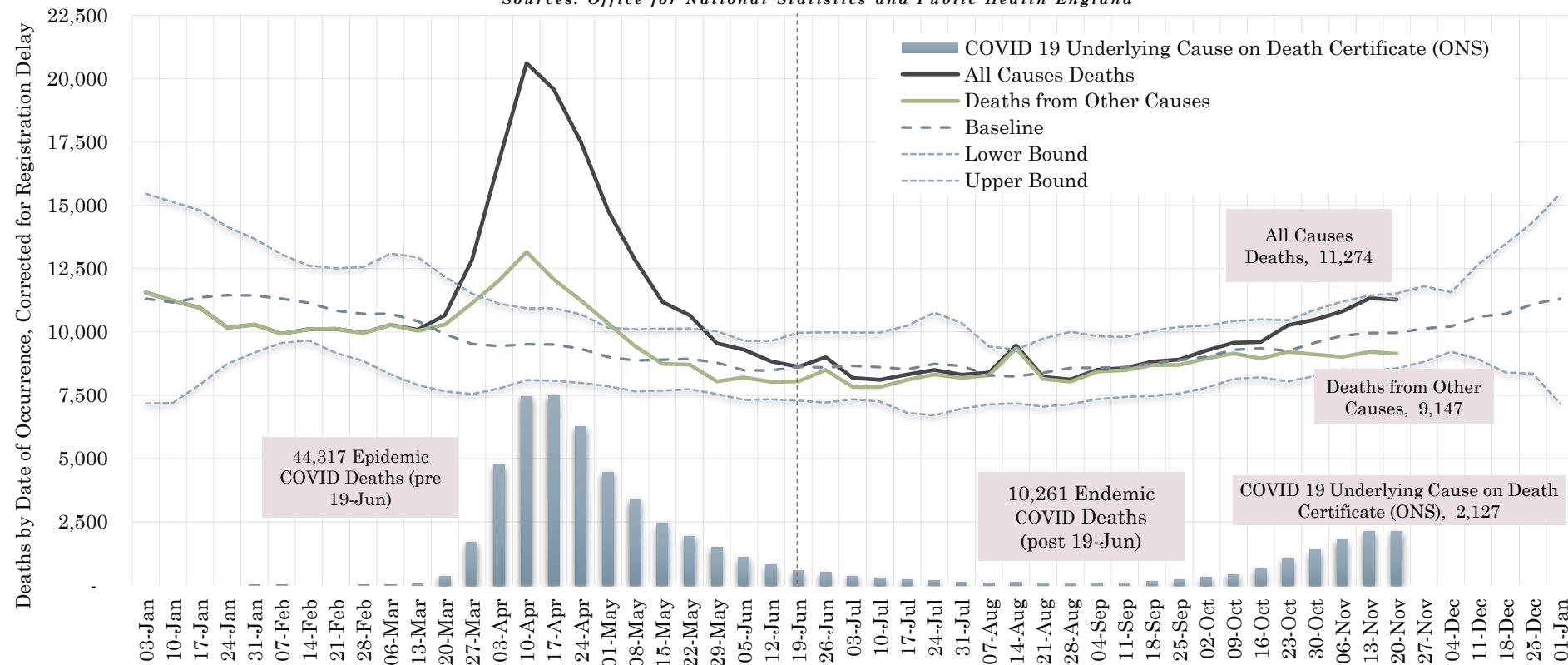
Office for National Statistics | <https://coronavirus.data.gov.uk> Google LLC "Google COVID-19 Community Mobility Reports". <https://www.google.com/covid19/mobility/> Accessed: 26-Nov-2020



Since Sept, as COVID-labelled deaths have risen, deaths from other causes have decreased, suggesting that some COVID deaths are wrongly attributed.

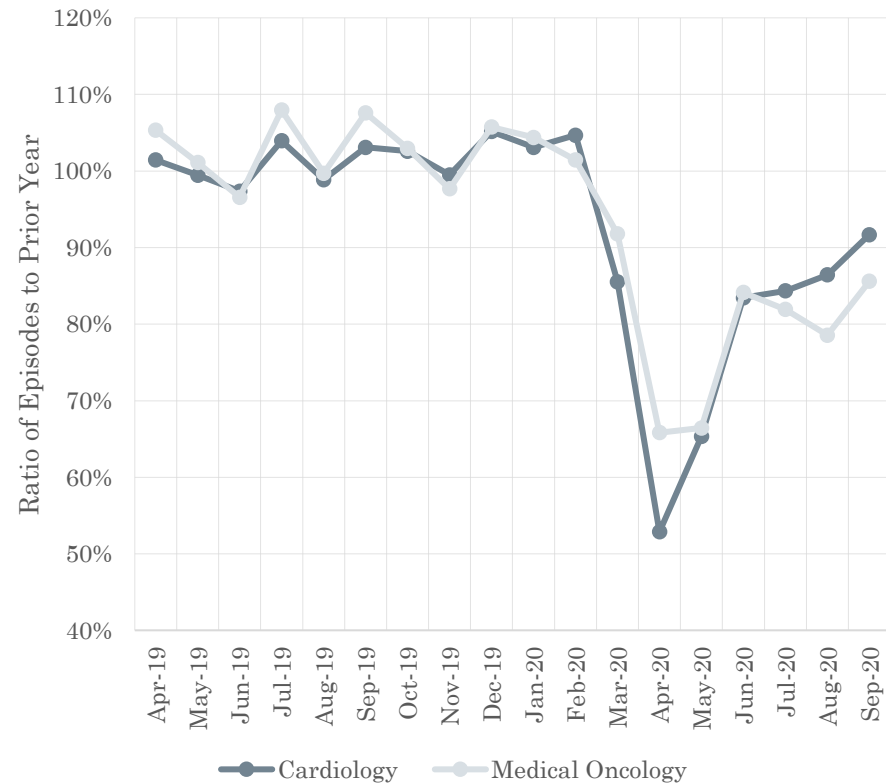
### England Deaths 2020 by Date of Occurrence

Sources: Office for National Statistics and Public Health England

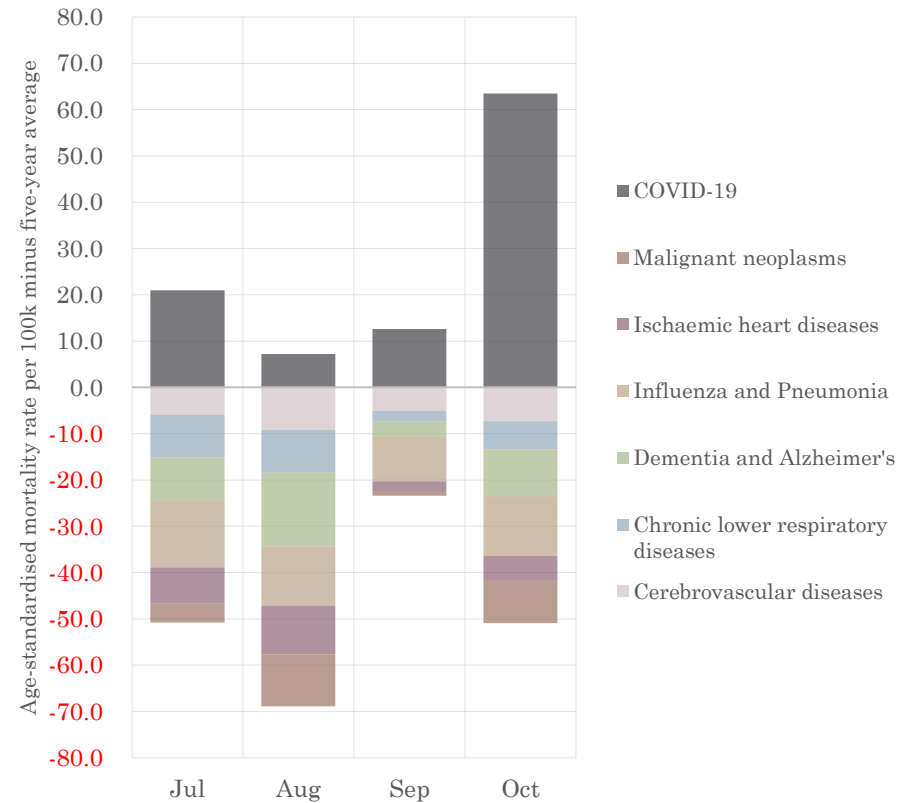


Despite a significant reduction in healthcare provision, apparently cardiac/circulatory and cancer deaths are lower than expected, as are all other respiratory causes.

FINISHED CONSULTANT EPISODES for NHS England  
<https://digital.nhs.uk/data-and-information/publications/statistical/hospital-episode-statistics-for-admitted-patient-care-outpatient-and-accident-and-emergency-data/april-2020---september-2020>



Major Underlying Causes of Death, England 2020  
 Source: Office for National Statistics



The evidence to support the continued existence of a public health emergency should be substantial. But the empirical clinical and mortality data strongly suggests there is no such emergency.

Number of deaths from all causes occurring on each day, five-year average and range, England  
*Source: Public Health England, Office for National Statistics*

